

HOMEWILLOW CLOSE, N21 2HJ



£145,000 Leasehold

- RETIREMENT FLAT
- LOUNGE
- BEDROOM
- COMMUNAL LOUNGE
- COMMUNAL GARDENS
- GROUND FLOOR
- KITCHEN
- SHOWER ROOM
- COMMUNAL LAUNDRY
- PATIO AREA

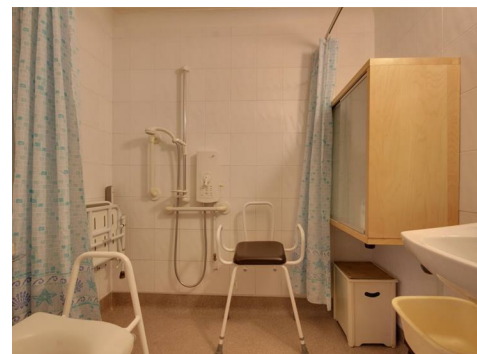
Property Details

Situated in the sought-after Homewillow Close development in Grange Park, this delightful one-bedroom ground floor retirement property offers comfort, convenience, and a wonderful sense of community. The apartment features a spacious lounge, fitted kitchen, bedroom and shower room.

Residents enjoy access to a variety of shared facilities, including a communal lounge—a perfect spot to socialise or relax—along with a laundry room and a guest suite available for visitors to hire. The expansive communal gardens offer a peaceful green retreat, beautifully maintained for all to enjoy.

Conveniently located, the property is within easy reach of local shops, restaurants, and Grange Park railway station, making day-to-day living both easy and enjoyable.

An excellent opportunity to be part of a friendly and secure retirement community in a prime North London location.



Energy Efficiency Rating		
	Current	Potential
Very energy efficient - lower running costs		
(92 plus) A		
(81-91) B		
(69-80) C	79	80
(55-68) D		
(39-54) E		
(21-38) F		
(1-20) G		
Not energy efficient - higher running costs		
England & Wales	EU Directive 2002/91/EC 