



RESIDENTIAL

SALES | LETTINGS | PROPERTY MANAGEMENT

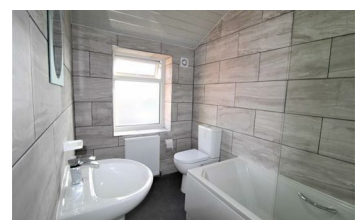
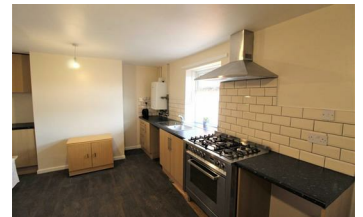


240 Bradford Road, Huddersfield, HD1 6LJ £550 Per Calendar Month



LB **By ADM RESIDENTIAL** This "THREE" bed roomed, stone built, terraced property located within this popular residential area of Huddersfield, having been newly decorated through-out and newly carpeted. Situated close to all local amenities, Within walking distance to the Town centre, schools and the Motorway Network. The property offers recently fitted gas central heating system and double glazing, briefly comprising of:- entrance door, hallway, spacious lounge with french doors, a large modern dining kitchen with access to the rear garden. To the first floor landing: newly fitted house bathroom with modern bathroom suite in white and three very good sized bedrooms. Externally there are gardens to front and rear offers large hard standing driveway for off street parking. Internal viewing is highly recommended, call us on 01484 644555 to book an appointment.

- STONE BUILT TERRACE
- LARGE NEW BATHROOM
- NEW CARPETS
- £634 BOND
- THREE BEDROOMS
- NEWLY DECORATED
- £550 RENT



55 Market Street, Milnsbridge, Huddersfield, West Yorkshire, HD3 4HZ
T: 01484 644555 | E: sales@admresidential.co.uk
www.admresidential.co.uk

