



Furness Road, NW10

£585,000 - Share of Freehold

As Sole agents, we are delighted to offer this three bedroom maisonette, providing 1,090 sq ft of accommodation set across the First and Second floors of a turn-of-the-century Victorian property.

This property features its own private entrance and a bright, south-facing reception room with a charming fireplace and stripped wooden floors. The First Floor offers two well-proportioned bedrooms and a spacious four piece bathroom suite. To the rear, a spacious kitchen leads into a dining area with direct access to the private garden via a staircase. The Second Floor houses the loft-converted third bedroom, offering excellent storage space.

Furness Road is a short drive from Westfield and near College Road, offering the Island Bar, delis, and cafés. Willesden Junction station is a short walk (Bakerloo- Zone 2) and (Overground/Lioness - Zone 2).



020 7328 2828 - 020 8459 1133
enquiries@cameronsstiff.co.uk

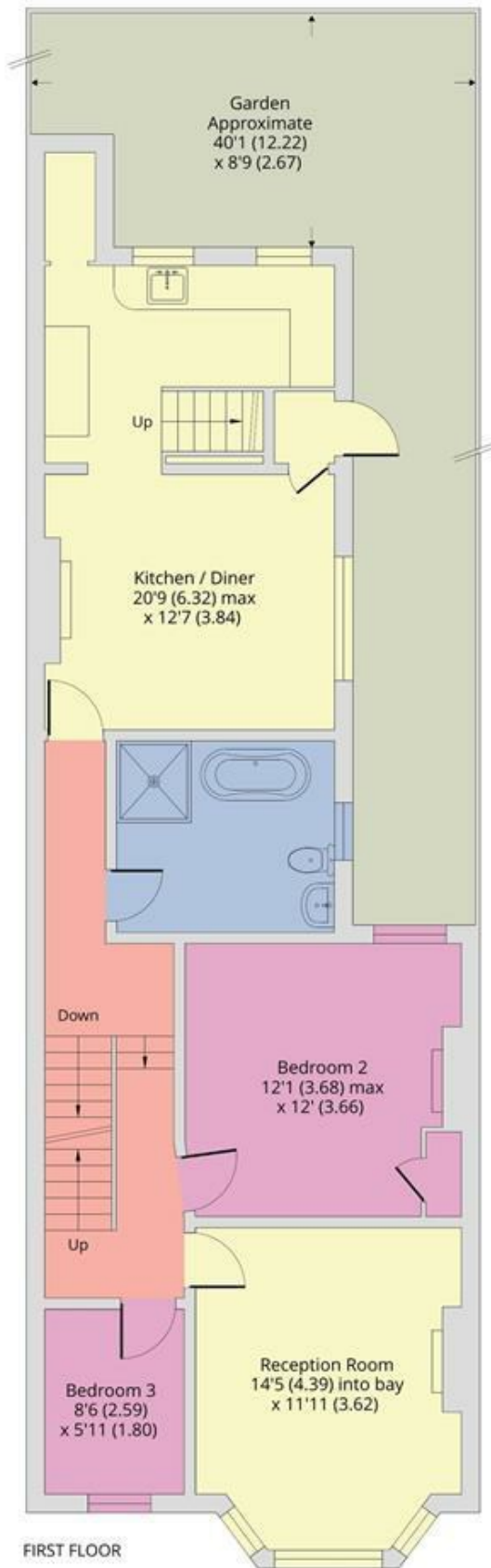
Furness Road, London, NW10

Approximate Area = 1090 sq ft / 101.2 sq m

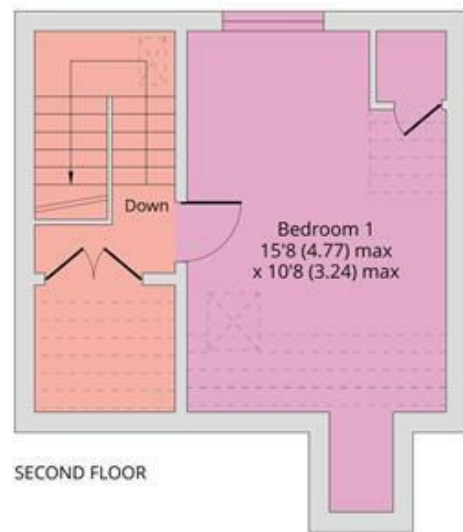
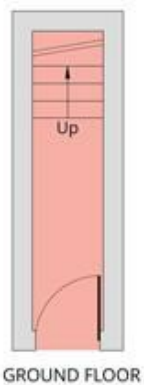
Limited Use Area(s) = 101 sq ft / 9.3 sq m

Total = 1191 sq ft / 110.5 sq m

For identification only - Not to scale



Denotes restricted head height



EPC: D
Ref: 19200512



Floor plan produced in accordance with RICS Property Measurement 2nd Edition, Incorporating International Property Measurement Standards (IPMS2 Residential). © nichecom 2025. Produced for Camerons Stiff & Co. REF: 1231177

