



## Jamaica Street, E1

£646 Per week

 3  1  2 

- Three Bedrooms
- Two Bathrooms
- Open Plan
- Communal Garden
- Secure Parking Space
- Stepney

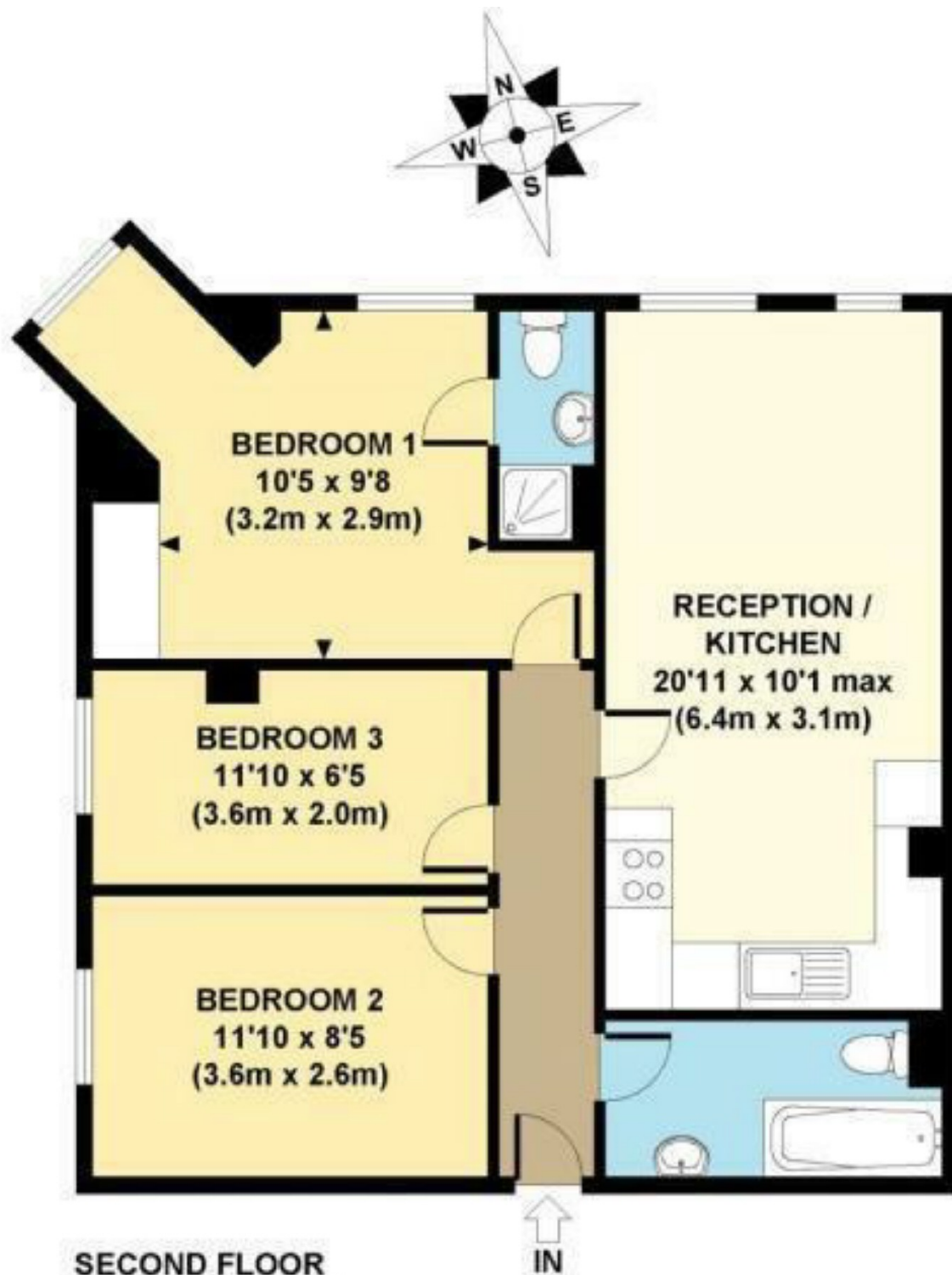


A three bedroom, two bathroom apartment on the top floor of a gated development. The property offers a lounge with an open plan kitchen, communal garden, secure parking space and is offered furnished.

Ideally located close to Stepney Green station and local bus routes providing great access to the City, Spitalfields, Shoreditch & Canary Wharf. Close to Queen Mary University and the Royal London Hospital.







**SECOND FLOOR  
GROSS INTERNAL  
FLOOR AREA 665 SQ FT**

**APPROX. GROSS INTERNAL FLOOR AREA 665 SQ FT / 62 SQ M**

35A Wapping High Street,  
London, E1W 1NR  
020 7702 3456  
ea2group.com