

## Jamaica Street, E1

£535,000

 3  1  2  C

- Three Bedrooms
- Two Bathrooms
- Open Plan
- Communal Garden
- Secure Parking Space
- Chain Free

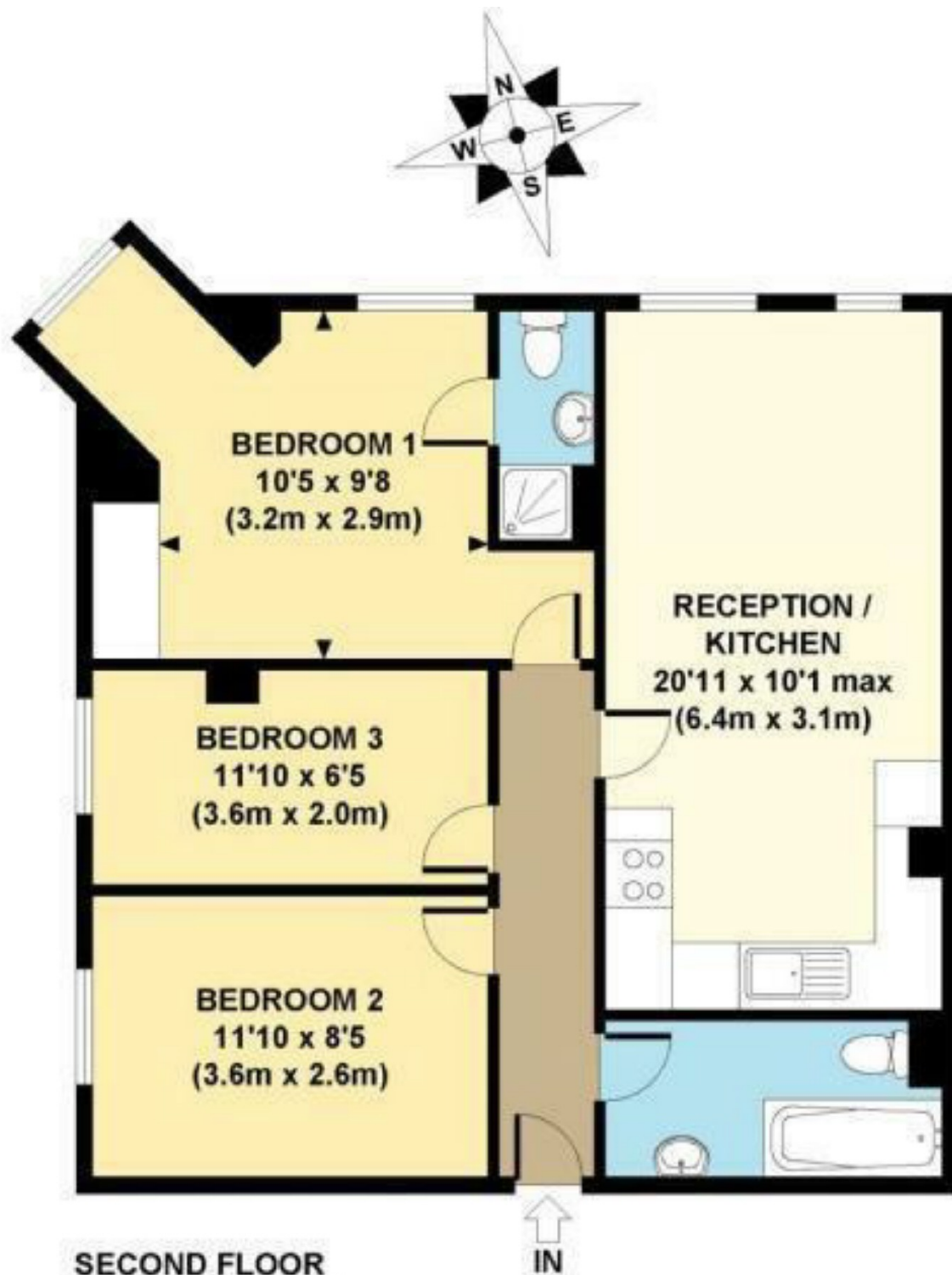


A three bedroom, two bathroom apartment on the top floor within a gated development. The property offers a lounge with an open plan kitchen, communal garden, secure parking space and is offered chain free. The Seller has advised us that they are currently achieving a rental income of £2950 per calendar month.

Ideally located close to Stepney Green station and local bus routes providing great access to the City, Spitalfields, Shoreditch & Canary Wharf. Close to Queen Mary University and the Royal London Hospital.







**SECOND FLOOR  
GROSS INTERNAL  
FLOOR AREA 665 SQ FT**

**APPROX. GROSS INTERNAL FLOOR AREA 665 SQ FT / 62 SQ M**

35A Wapping High Street,  
London, E1W 1NR  
020 7665 5589  
ea2group.com