



## Asher Way, E1W

£550,000

 2  1  1  C

- Modern Apartment
- Two Bedroom
- Fitted Kitchen
- Allocated Parking
- Day time Porter
- West Wapping



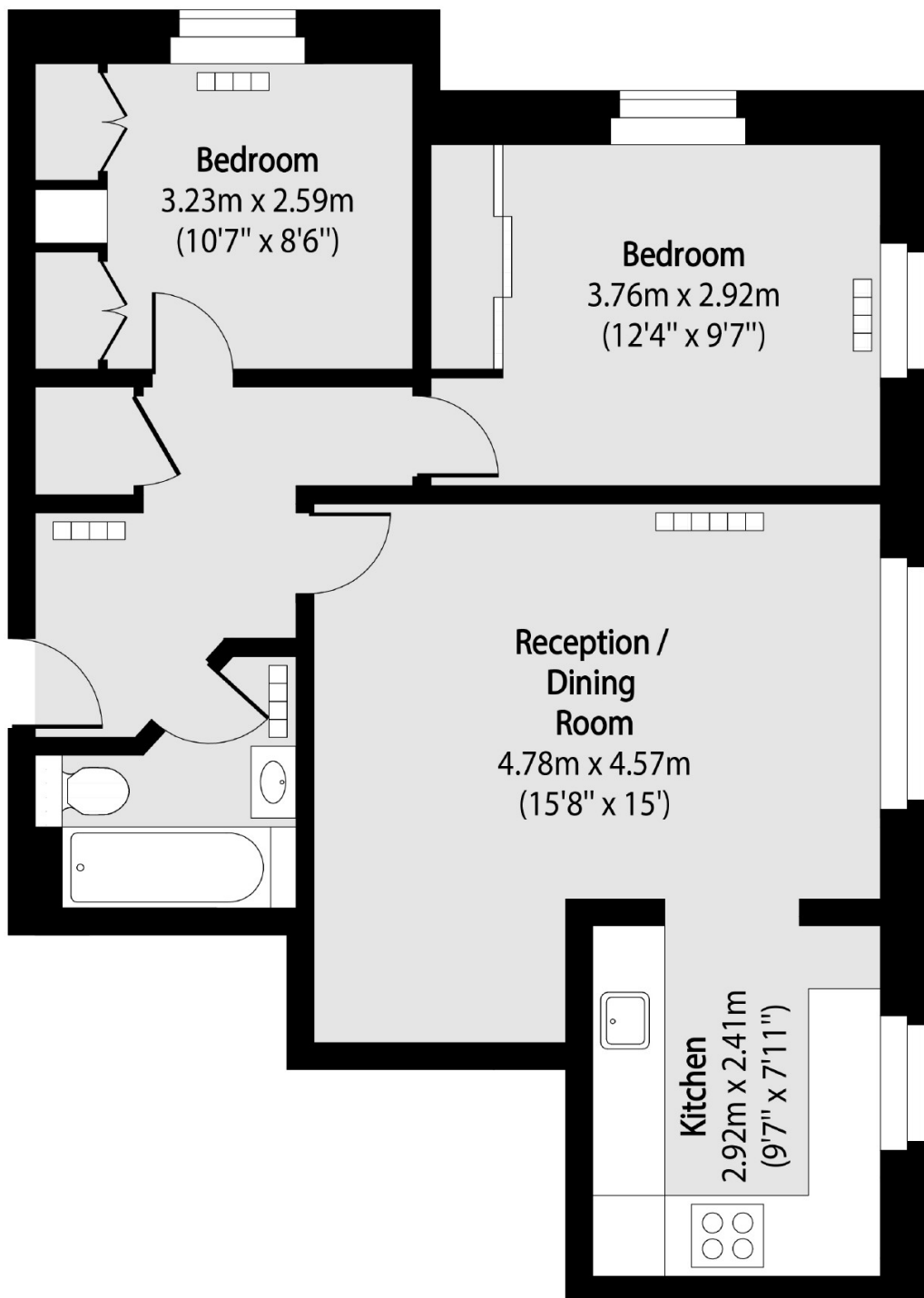


Located in the heart of Wapping, this well maintained two bedroom apartment in the Quay 430 development offers modern living in one of London's most sought after riverside neighbourhoods. The property features a bright, spacious living area and a modern fitted kitchen. The property comes with allocated parking and a day time porter. The River Thames and the chic cafés, restaurants, and stores in the region are just a short distance away. Perfect for professionals or anyone looking for a stylish urban lifestyle.

It's easy to commute thanks to ample transportation connections. Walking from the property to Wapping Overground Station is a 0.5 mile walk. Tower Gateway DLR station and Tower Hill Underground station are both accessible on foot. Additionally, there are bus routes and Thames Clipper services from Tower Pier, which is nearby.







Total area (approx): 58.71 sq m (632 sq. ft)

35A Wapping High Street,  
London, E1W 1NR  
020 7665 5589  
ea2group.com