

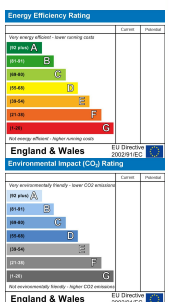
The Dylan Coastal Resort Laugharne, Carmarthen, Carmarthenshire, SA33

ASC

- Luxury Lodges
- Walk-In Wardrobe And En-Suite
- Fully Fitted Raised Kitchen With Island unit
- High Quality Soft Furnishings
- Stunning Estuary Views
- Two or Three Bedrooms
- Five burner Gas Hob, Eye-Level Oven
- Entertainment System Including Samsung TV
- 990sq.ft of Living Space And 220sq.ft Of Outside Garden Patio
- Energy-Efficient A-rated Boiler

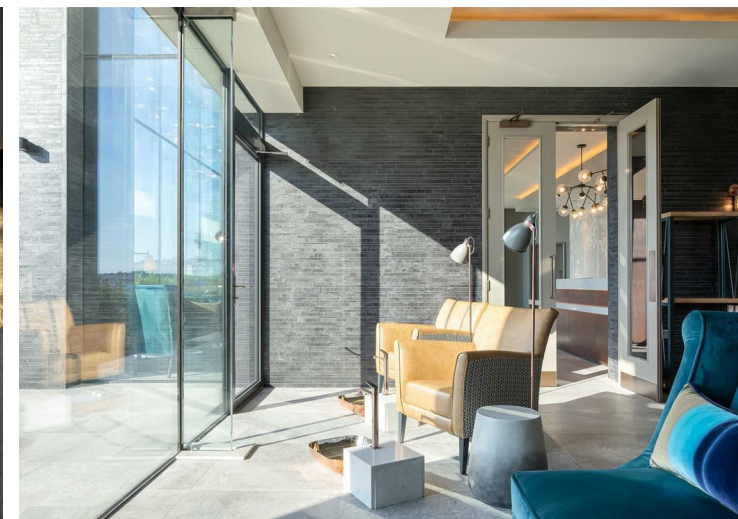
Prices From £295,000

COMPUTER-LINKED OFFICES THROUGHOUT WEST WALES and Associated office in Mayfair, London



WE WOULD LIKE TO POINT OUT THAT OUR PHOTOGRAPHS ARE TAKEN WITH A DIGITAL CAMERA WITH A WIDE ANGLE LENS. These particulars have been prepared in all good faith to give a fair overall view of the property. If there is any point which is of specific importance to you, please check with us first, particularly if travelling some distance to view the property. We would like to point out that the following items are excluded from the sale of the property: Fitted carpets, curtains and blinds, curtain rods and poles, light fittings, sheds, greenhouses - unless specifically specified in the sales particulars. Nothing in these particulars shall be deemed to be a statement that the property is in good structural condition or otherwise. Services, appliances and equipment referred to in the sales details have not been tested, and no warranty can therefore be given. Purchasers should satisfy themselves on such matters prior to purchase. Any areas, measurements or distances are given as a guide only and are not precise. Room sizes should not be relied upon for carpets and furnishings.

COMPUTER-LINKED OFFICES THROUGHOUT WEST WALES and Associated office in Mayfair, London

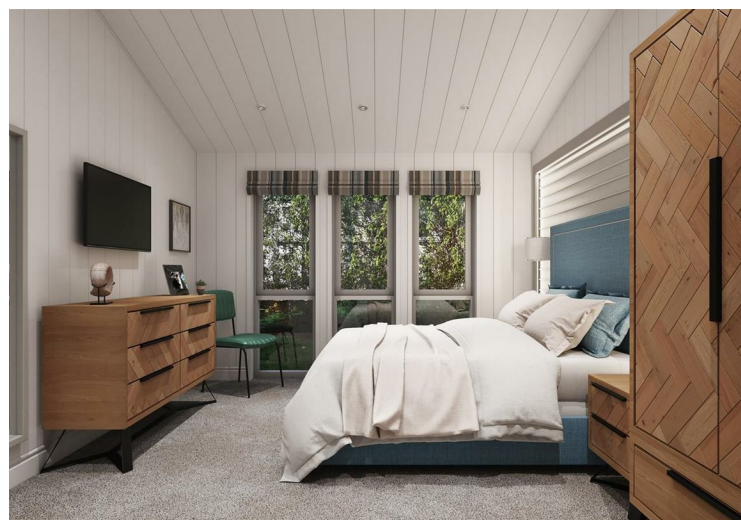


LUXURY HOLIDAY HOMES FOR SALE IN WEST WALES
 ** 360 VIRTUAL WALKTHROUGH VIDEO AVAILABLE**

A collection of coastal lodges in West Wales that feature unique architecture, state-of-the-art amenities, and stunning sea views. With their innovative design, bright and beautiful interiors, and state-of-the-art kitchen facilities, Multiple skylights flood the interiors with natural daylight, while earthy textures and smooth metallic detailing create a modern space that's perfect for entertaining. Unbeatable views, a choice of two or three bedrooms, and a range of furniture and soft furnishings included as standard.

LODGE SPECIFICATION

- Two or three-bedroom options available
- 990sq.ft of living space and 220sq.ft of outside garden patio
- Vaulted ceilings
- Walk-in wardrobe and en-suite
- Entertainment system including Samsung TVs
- Fully fitted raised kitchen with island unit
- Five burner gas hob, eye-level oven, microwave, dishwasher, fridge/freezer, dual washer/dryer and wine cooler - all Bosch
- High quality soft furnishings including sofa, curtains, laminate flooring and carpets
- Dining table including four chairs and a bench seat
- Coffee table, entertainment unit, sideboard, and lamp table
- Energy-efficient A-rated boiler
- A yearly service charge from £7,000



DIRECTIONS

DIRECTIONS: Dylan Coastal Resort, Laugharne, Carmarthen, SA33 4SG. We're just a short drive from the town of Carmarthen. You'll find us tucked in a picturesque corner of South Wales, overlooking the Taf Estuary.

See our website www.westwalesproperties.co.uk in our TV channel to view our location videos about the area.