



Parkthorne Road, SW12

£1,000,000

Located on a popular tree-lined street is this beautifully presented four bedroom, 1930's family home. With an open plan kitchen / dining room and separate reception room, this home offers perfect entertaining space.

- 1930's Family Home
- Four Bedrooms
- Beautifully Presented
- Two Bathrooms
- South Facing Garden
- Telford Park Estate

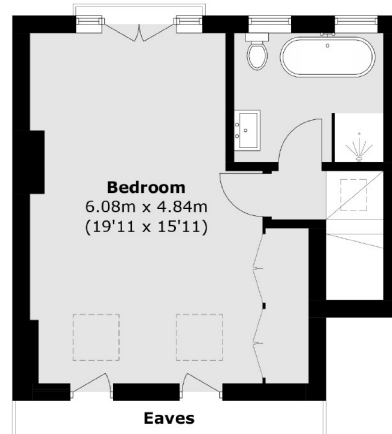


The first floor offers two generous double bedrooms and a further smaller double, as well as a good sized family bathroom. The second floor offers a large master with a lovely en-suite bathroom.

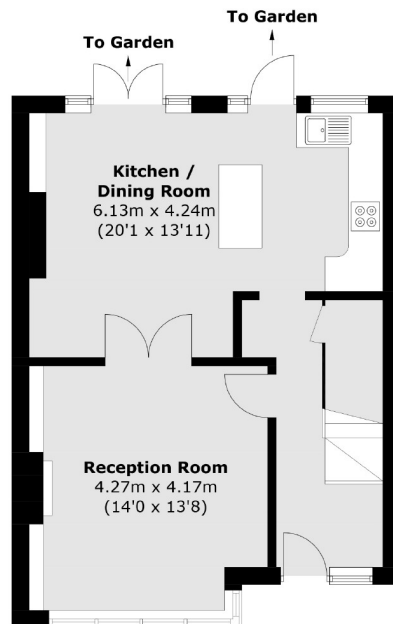
Parkthorne Road is a quiet residential road sitting on the leafy borders of Balham and is within easy reach of both Balham and Clapham South stations, offering Northern line services and mainline services (Balham). There are also excellent bus services to Brixton which has the Victoria line.



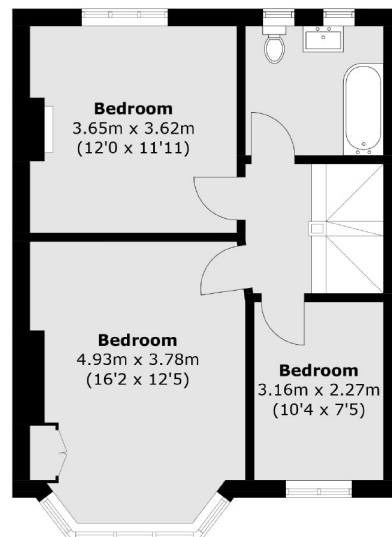




Second Floor



Ground Floor



First Floor

Total area (approx.): 138.1 sq. m (1,486.5 sq. ft)
(Excluding Eaves)

Jacksons Balham
8-11 Balham Station Road
London
SW12 9SG
020 8675 6555
balham.sales@jacksonsestateagents.com

Energy Rating: D We aim to make our particulars both accurate and reliable. However they are not guaranteed; nor do they form part of an offer or contract. If you require clarification on any points then please contact us, especially if you're traveling some distance to view. Please note that appliances and heating systems have not been tested and therefore no warranties can be given as to their good working order.