



WETHERELL
MAYFAIR'S FINEST PROPERTIES



JERMYN STREET, SW1Y

£3,150,000

A well-presented two-bedroom apartment with high ceilings in an imposing stone fronted building.

This apartment of approximately 1100 sq. Ft is 5 windows wide with south facing views over Jermyn Street. The characterful living room has classic wooden parquet flooring, built in storage high ceilings and three large sash windows. The principal bedroom is quietly situated at the rear of the apartment and has built in wardrobes and en suite bathroom. There is a second bedroom with built in wardrobes, separate bathroom, and separate kitchen. The property further benefits from a porter and lift access.

Jermyn Street, well known for its established gentleman's outfitters, art galleries, hotels, and restaurants, is excellently located close to Piccadilly and St James Park. Dating from 1664, it retains a feeling of traditional charm whilst affording modern convenience.

153 year lease

THIS PROPERTY IS PERFECTLY POSITIONED TO TAKE FULL ADVANTAGE OF ALL THE AMENITIES THAT ST JAMES'S AND MAYFAIR HAVE TO OFFER. PICCADILLY CIRCUS IS THE CLOSEST TUBE STATION.

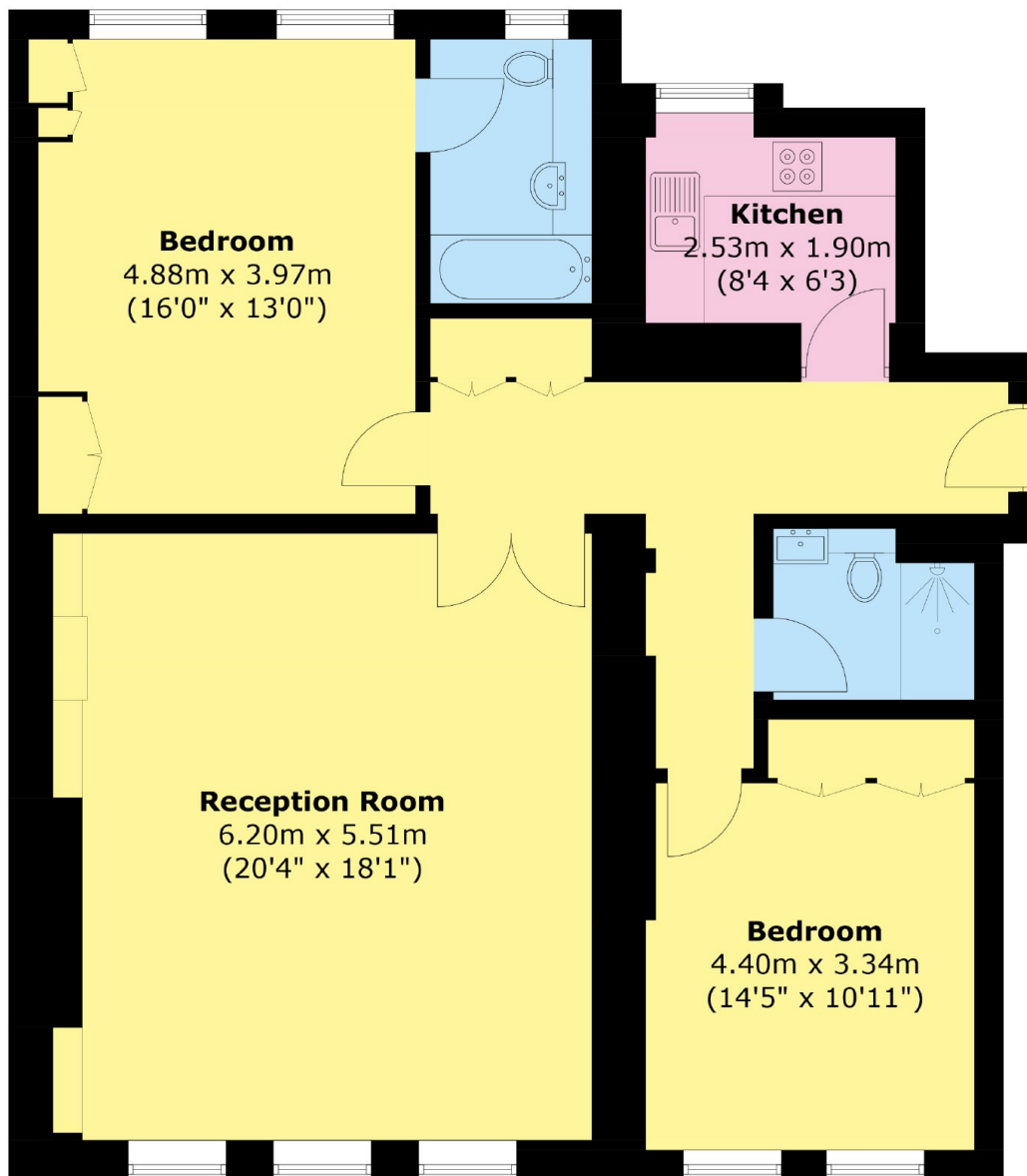


FEATURES

- Two Bedrooms • Two Bathrooms • First Floor • High Ceilings • Lift • Concierge •



JERMYN STREET, LONDON, SW1Y



Total area (approx.): 102.0 sq. m (1,097.9 sq. ft)



WETHERELL
MAYFAIR'S FINEST PROPERTIES

102 Mount Street,
London, W1K 2TH
T: 020 7529 5566
E: sales@wetherell.co.uk

We aim to make our particulars both accurate and reliable. However they are not guaranteed; nor do they form part of an offer or contract. If you require clarification on any points then please contact us, especially if you're traveling some distance to view. Please note that appliances and heating systems have not been tested and therefore no warranties can be given as to their working order.

wetherell.co.uk