

# Frank Harris & Co.



## Burton Street, WC1H

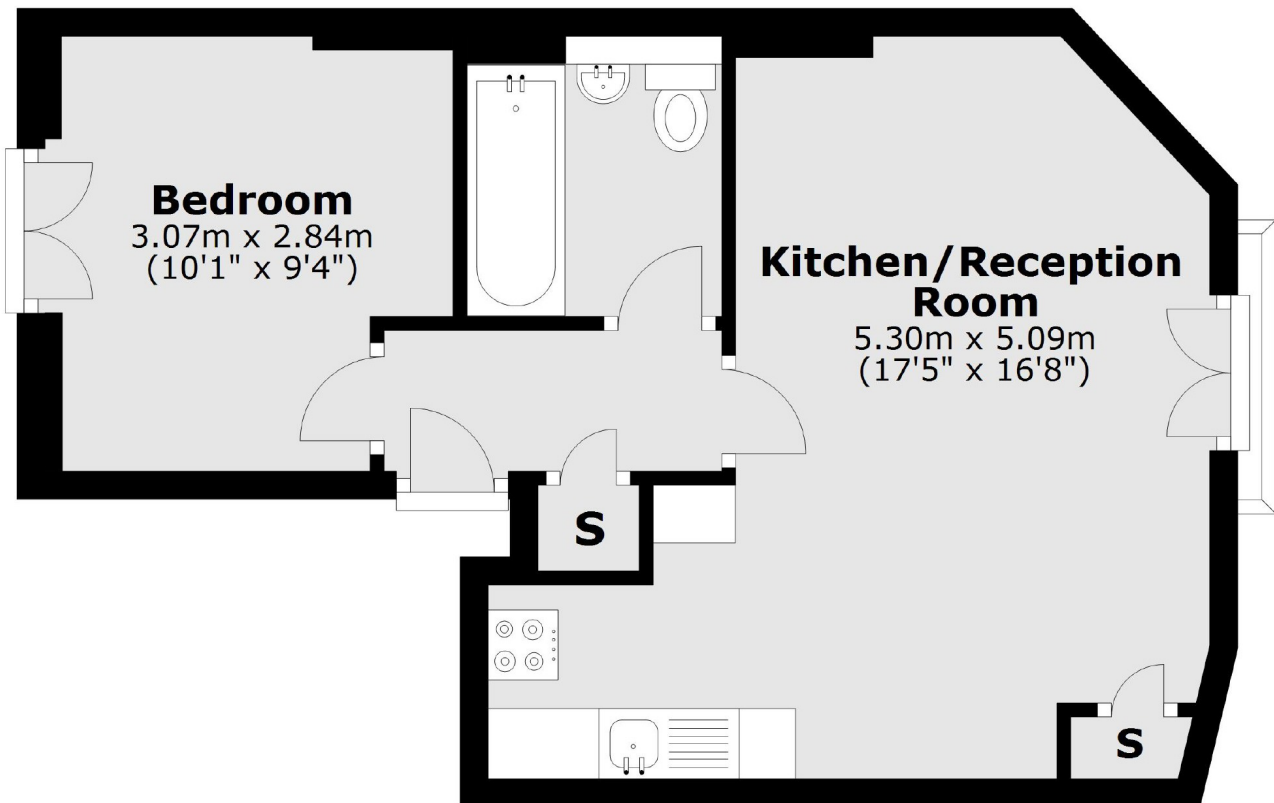
£450,000

The property benefits from high ceilings, large windows, gas central heating and a Juliet balcony. Set on the first floor of a beautiful converted Georgian house, with attractive views over the gardens of The British Medical Association building.

Burton Street is a quiet cul-de-sac, close by to both Euston and Kings Cross stations.

- Georgian Conversion • Sought After Location • High Ceilings •

## First Floor



Total area: approx. 36.1 sq. metres (388.8 sq. feet)

Frank Harris & Co. Bloomsbury and Kings Cross  
81 Marchmont Street,  
London, WC1N 1AL  
020 7405 4444  
bloomsburysales@frankharris.co.uk

Energy Rating: C. We aim to make our particulars both accurate and reliable. However they are not guaranteed; nor do they form part of an offer or contract. If you require clarification on any points then please contact us, especially if you're traveling some distance to view. Please note that appliances and heating systems have not been tested and therefore no warranties can be given as to their good working order.