

Frank Harris & Co.



Heathcote Street, WC1N

£530 Per week

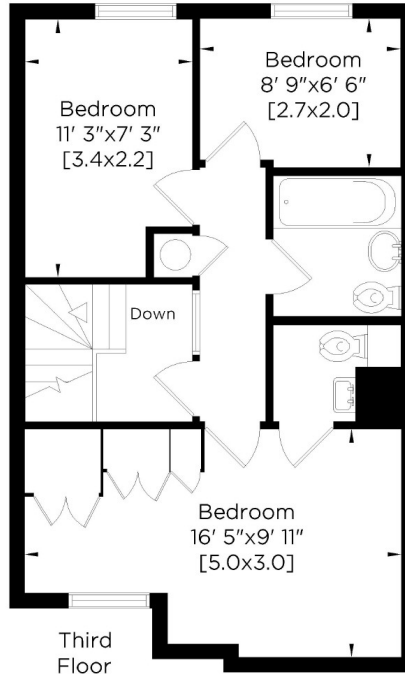
A stylish and exceptionally spacious three bedroom duplex on the 2nd & 3rd floors of this prestigious mansion block with communal garden. There is a large living/dining room, one single/study, two bathrooms and smart separate kitchen.

Grayland Court is a well maintained Purpose built block with easy access to Waitrose and the shopping facilities of the Brunswick Center. Both Kings Cross and Russell Square Underground Stations are close by.

- Maximum of two people • Three bedrooms • 2nd and 3rd floor Duplex •
- Stylish Separate Kitchen • Communal Garden • Prestigious Block •

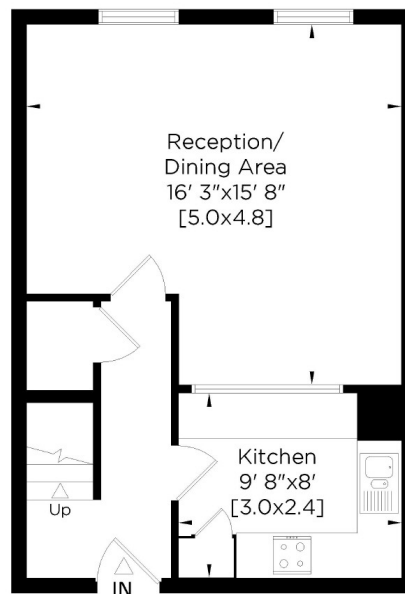
Frank Harris & Co.

Grayland Court
London WC1
Gross Internal Area
77 Sq. metres
827 Sq. feet



Whilst every attempt has been made to ensure the accuracy of this floor plan, measurements of doors, windows, rooms and Sq. footage are approximate within 5% accuracy. For identification purposes only. Walls with small angles drawn Straight. Not to be used as part of the decision to buy. You must recheck all details before purchase and only purchase when you have confirmed them. No appliances tested. Not to scale. © - www.steele.london - Email: patricia@steele.london - Tel: 07847 219401

Second
Floor



Frank Harris & Co. Bloomsbury and Kings Cross
81 Marchmont Street, London,
WC1N 1AL
020 7387 0077
bloomsburylettings@frankharris.co.uk

Energy Rating: C. We aim to make our particulars both accurate and reliable. However they are not guaranteed; nor do they form part of an offer or contract. If you require clarification on any points then please contact us, especially if you're traveling some distance to view. Please note that appliances and heating systems have not been tested and therefore no warranties can be given as to their good working order.