

# Frank Harris & Co.



## King's Cross, N1

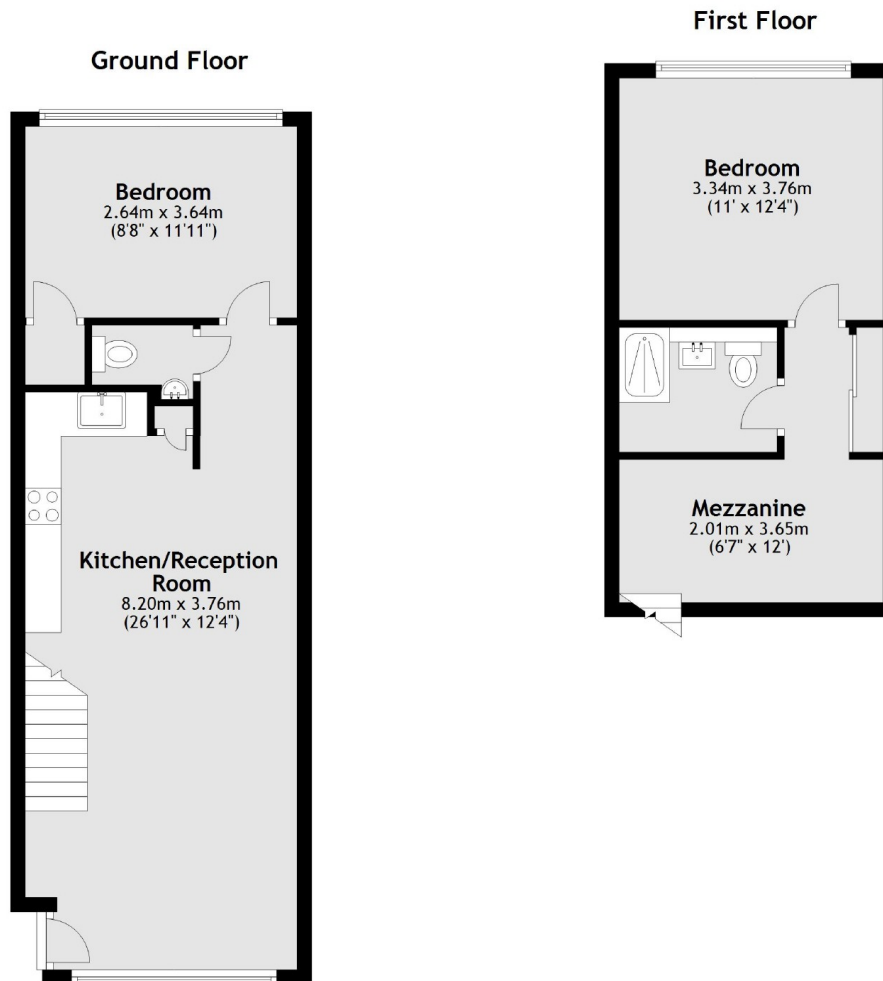
£875,000

Offered in great condition, the property has two double bedrooms, open plan kitchen living room mezzanine landing, upstairs there is a bathroom, downstairs there is a second WC and a communal courtyard with fish pond.

Gattis Wharf is located a 7 minutes walk from Kings Cross Stations and is located just a stones throw away from the Regents Canal.

- Two Double Bedrooms • Warehouse Conversion • Gated Entry •
- Modern Spec • Waterside Location • Mezzanine •

# Frank Harris & Co.



Total area: approx. 69.7 sq. metres (750.7 sq. feet)

Frank Harris & Co. Bloomsbury and Kings Cross  
81 Marchmont Street,  
London, WC1N 1AL  
020 7405 4444  
bloomsburysales@frankharris.co.uk

Energy Rating: . We aim to make our particulars both accurate and reliable. However they are not guaranteed; nor do they form part of an offer or contract. If you require clarification on any points then please contact us, especially if you're traveling some distance to view. Please note that appliances and heating systems have not been tested and therefore no warranties can be given as to their good working order.