



CLARGES STREET

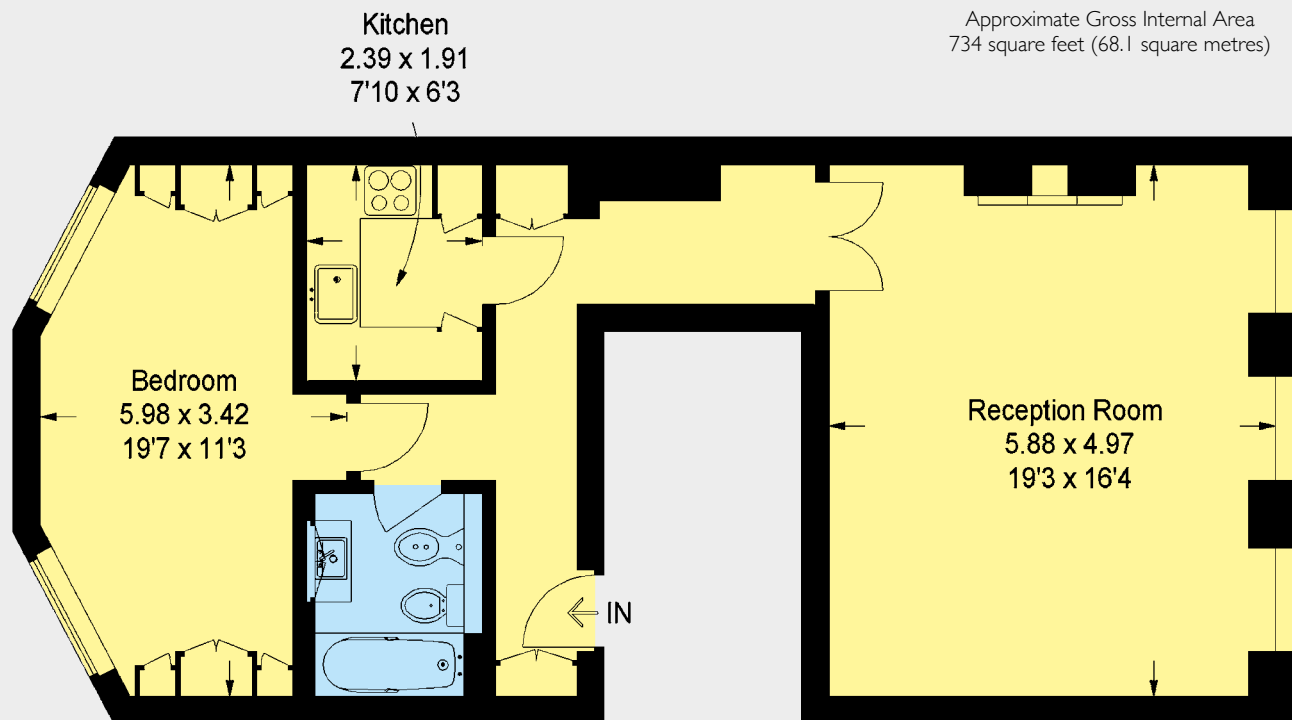
MAYFAIR W1



A CHARACTER ONE BEDROOM APARTMENT WITH HIGH CEILINGS AND SPANNING THREE WINDOWS ACROSS A PROMINENT PERIOD BUILDING



Approximate Gross Internal Area
734 square feet (68.1 square metres)



FIRST FLOOR

This elegant one bedroom apartment with high ceilings throughout offers good natural light and spacious living. The beautifully decorated reception with floor to ceiling windows leads onto a large master bedroom.

Clarges Street runs south off Curzon Street through to Piccadilly, with close proximity to Green Park and London's famous Ritz Hotel.

- Entrance Hall
- Reception Room
- Kitchen
- Master Bedroom
- Bathroom
- 734 Square Feet

Tenure: Leasehold, approximately 63 years remaining
Service Charge: £2,800 per annum approx
Ground Rent: £400 per annum approx
Asking Price: £1,375,000

Sole Agent



WETHERELL
MAYFAIR'S FINEST PROPERTIES

102 Mount Street · London · W1K 2TH
T: 020 7529 5566 E: sales@wetherell.co.uk
wetherell.co.uk

Wetherell have no authority to make or give any representations or warranties in relation to the property. These particulars do not form part of any offer or contract and must not be relied upon as statements or representations of fact. Any areas, measurements or distances are approximate. The text, photographs and plans are for guidance only and are not necessarily comprehensive. It should not be assumed that the property has all the necessary planning, building regulation or other consents and Wetherell have not tested any services, equipment or facilities. Purchasers must satisfy themselves by inspection or otherwise. Energy Efficiency Rating: Band F. Note: Images as originally furnished. June 2023.

NO-ONE KNOWS MAYFAIR BETTER THAN WETHERELL