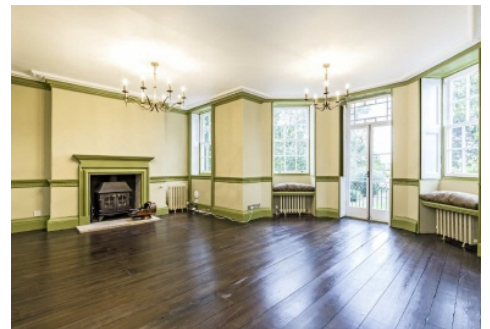


# SNELLERS

ESTATE AGENTS



**Thames Street, TW12**

**£5,500 PCM**

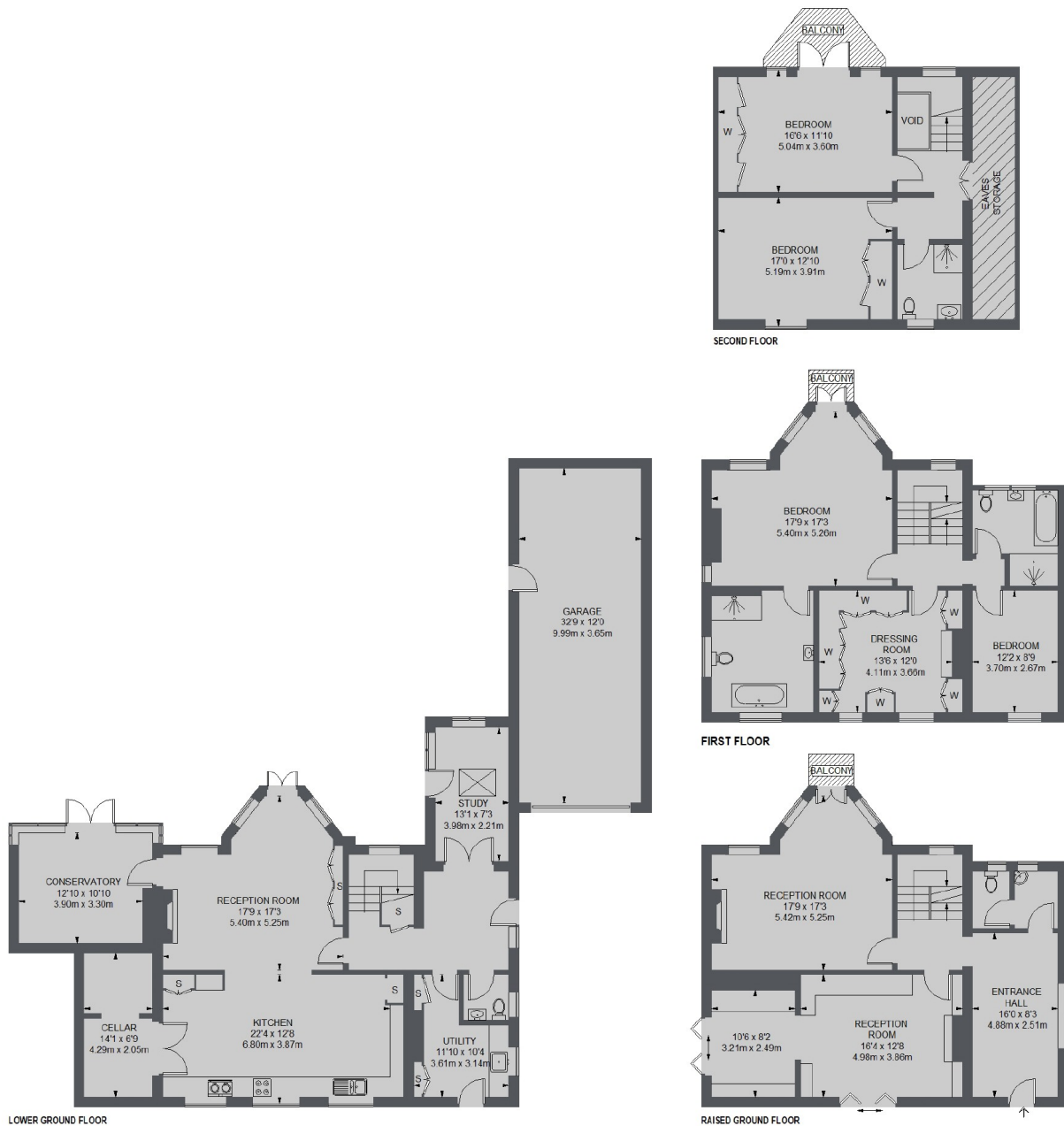
A truly prestigious five bedroom detached family home that combines period charm and modern living and is also one of the most historic houses in Hampton.

The house is located on the banks of the River Thames and is also in the heart of Hampton Village and benefits from being moments from Bushy Park, Hampton Station and all of the shops and restaurants that the Village has to offer.

- Riverside • Five Bedroom • Detached House •
- Three Bathrooms • Georgian Grade II listed • Private Swimming Pool •
- Private Mooring • Off Street Parking • Double Length Library •

# SNELLERS

ESTATE AGENTS



TOTAL APPROX. FLOOR AREA (EXCLUDING EAVES STORAGE / VOID)  
 3494 SQ. FT. (324.64 SQ. M.)  
 GARAGE = 398 SQ. FT. (36.97 SQ. M.)

Snellers Hampton Hill Lettings  
 197-201 High Street  
 Hampton Hill  
 TW12 1NL  
 020 8783 3633  
[hamptonlettings@snellers.co.uk](mailto:hamptonlettings@snellers.co.uk)

Energy Rating: D We aim to make our particulars both accurate and reliable. However they are not guaranteed; nor do they form part of an offer or contract. If you require clarification on any points then please contact us, especially if you're traveling some distance to view. Please note that appliances and heating systems have not been tested and therefore no warranties can be given as to their good working order