

# FLETCHERS

ESTATE AGENTS

---



**Thorney Hedge Road, W4**

**£1,750,000**

A superb semi-detached family home that offers fantastic living space (c. 2744 sq ft), five double bedrooms and three bathrooms. The house has been meticulously looked after and upgraded to a high standard and benefits further from an extensive west-facing garden.





The ground floor consists of a large double reception room with high ceilings, fireplaces and a dining area. This leads through to a modern eat-in kitchen that has been extended with skylights and sliding doors which bring in plenty of natural light. The garden is a superb size, a mixture of patio and lawn and is perfect for family usage.

Upstairs, the first floor has three double bedrooms, a family bathroom and an en suite to the master. Up on the second floor, there are two further double bedrooms and one bathroom, these make fantastic kids rooms or alternatively a great place to work from home. The house further benefits from a larger than average cellar/ basement level which has very useable storage space.

Thorney Hedge Road is a quiet residential tree lined street with Gunnersbury Station on the doorstep. There are plenty of independent shops, bars and restaurants on the popular Chiswick High Road and Turnham Green.

- Five Bedrooms • Three Bathrooms • Semi-Detached House •
- Superb Living Space • Large Garden • No Onward Chain •

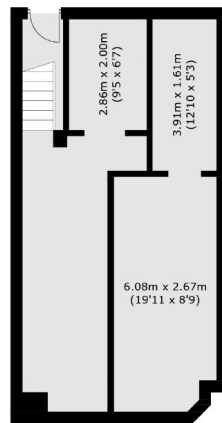




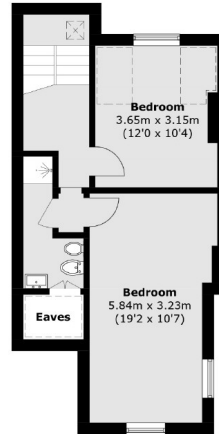


# FLETCHERS

## ESTATE AGENTS



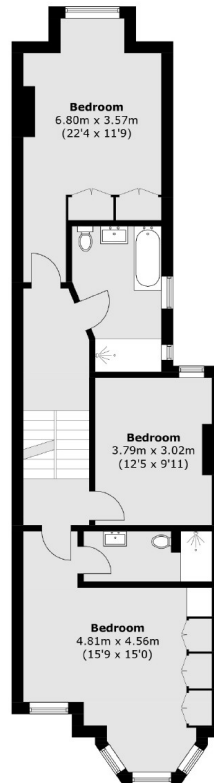
**Basement**



**Second Floor**



**Ground Floor**



**First Floor**

Total area (approx.): 255.0 sq. m (2,744.6 sq. ft)  
(Excluding Eaves)

Fletchers Chiswick Turnham Green Sales  
58 Turnham Green Terrace  
London  
W4 1QP  
020 8987 3000  
[chiswicksales@fletcherestates.com](mailto:chiswicksales@fletcherestates.com)

Energy Rating: E We aim to make our particulars both accurate and reliable. However they are not guaranteed; nor do they form part of an offer or contract. If you require clarification on any points then please contact us, especially if you're traveling some distance to view. Please note that appliances and heating systems have not been tested and therefore no warranties can be given as to their good working order