

FLETCHERS

ESTATE AGENTS



Grove Park Gardens, W4

£2,850,000

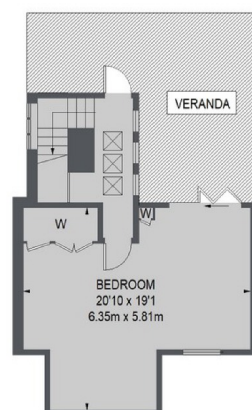
A unique five bedroom semi detached family home, with a 90' garden and off-street parking. The house was built and architecturally designed in keeping with the Edwardian feel of Grove Park Gardens, and with exceptional attention to natural light and layout.

Grove Park Gardens is a short walk to Chiswick Overground station and the River Thames. Chiswick High Road is within a quarter of a mile and offers plenty to do with an abundance of restaurants, shops and cafés.

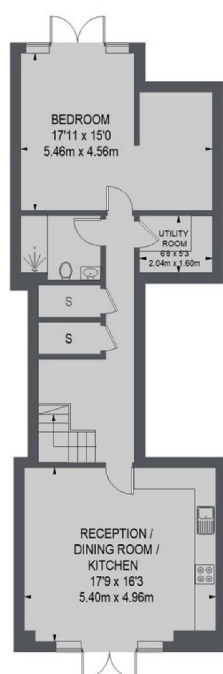
• Five Bedroom House • Self Contained Basement • 90 Foot Garden • Circa 3150 sq foot • Semi Detached • Indoor Pool •

FLETCHERS

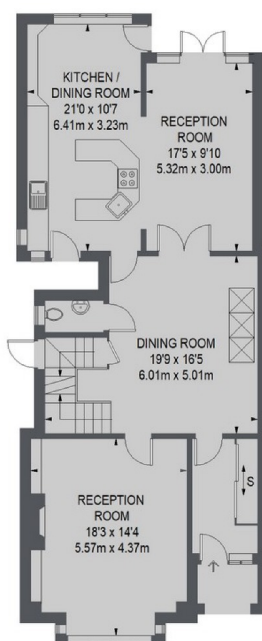
ESTATE AGENTS



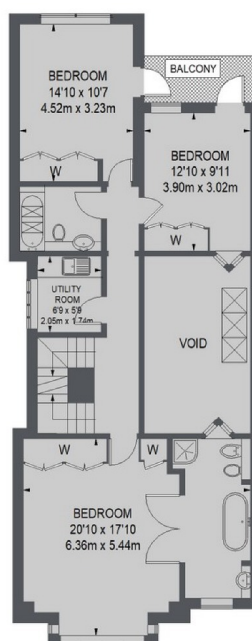
SECOND FLOOR



BASEMENT



GROUND FLOOR



FIRST FLOOR

TOTAL APPROX. FLOOR AREA (EXCLUDING VOID)
3156 SQ. FT. (293.16 SQ. M.)

Fletchers Chiswick Turnham Green Sales
58 Turnham Green Terrace, London, W4 1QP
020 8987 3000
chiswicksales@fletcherestates.com

Energy Rating: C. We aim to make our particulars both accurate and reliable. However they are not guaranteed; nor do they form part of an offer or contract. If you require clarification on any points then please contact us, especially if you're traveling some distance to view. Please note that appliances and heating systems have not been tested and therefore no warranties can be given as to their good working order.