



Oxford Street, Rugby
Offers Over £169,950

complete 
ESTATE AGENTS

Oxford Street, Rugby, Rugby

Complete Estate Agents are delighted to welcome to the market a traditional two bedroom mid terrace situated within walking distance to Rugby train station, town centre, local shops and schools. The property comprises of lounge, dining room and kitchen. Upstairs there are two double bedrooms and main family bathroom. There is a garden to the rear. Viewing is essential to appreciate this delightful home.

Lounge 11'10" x 10'4" (3.63 x 3.15)

Front door, window to front and radiator.

Dining Room 12'2" x 10'2" (3.71 x 3.12)

Window to rear, storage cupboard and door to kitchen.

Kitchen 14'11" x 4'9" (4.55 x 1.45)

Having base units with sink and drainer, induction hob with overhead extractor unit, integral oven, window to side, double glazed door to side, tiling to splash back areas and a one year old wall mounted Baxi boiler.

Landing

Door to all rooms and loft access.

Bedroom One 13'1" x 12'0" (4.01 x 3.68)

Window to front and radiator.



Bedroom Two 13'1" x 7'10" (3.99 x 2.41)

Window to rear and radiator.

Bathroom 6'11" x 6'5" (2.13 x 1.98)

Panelled bath, low level wc, wash hand basin, heated towel rail, tiling to splash back areas, tiled flooring and extractor fan.

Rear Garden

Pathway across the rear to the shared side gated pedestrian access. The main garden has a patio area, fencing to all sides and laid mainly to lawn with established shrubs and borders and shed.

About Rugby

Rugby is a market town in Warwickshire, England, on the River Avon. The town has a population of 70,628 (2011 census[1]) making it the second largest town in the county. The enclosing Borough of Rugby has a population of 100,500 (2011 census). Rugby is 13 miles (21 km) east of Coventry, on the eastern edge of Warwickshire, near the borders with Northamptonshire and Leicestershire. The town is credited with being the birthplace of rugby football.

Rugby Borough Council

Rugby Borough Council,
Town Hall,
Evreux Way,
Rugby
CV21 2RR

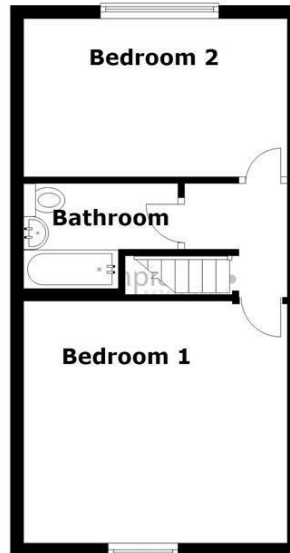




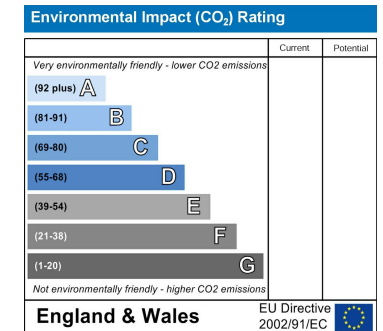
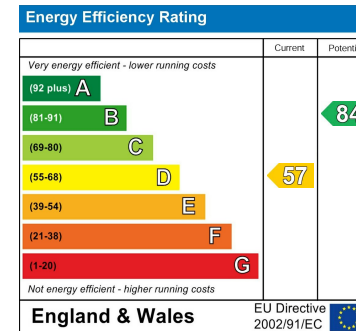
Ground Floor



First Floor



This floorplan is to be used as a guide only and not be taken as fact or to scale. The property may be different to actual diagram shown and square footage may differ. Plan produced using PlanUp.



Misrepresentation Act 1967 - These particulars are believed to be correct but their accuracy is not guaranteed nor do they form part of any contract.

18 Church Street, Rugby, Warwickshire, CV21 3PU
 T: 01788 550 800
 sales@complete247.co.uk
 www.complete247.co.uk

complete ●●●
 ESTATE AGENTS