

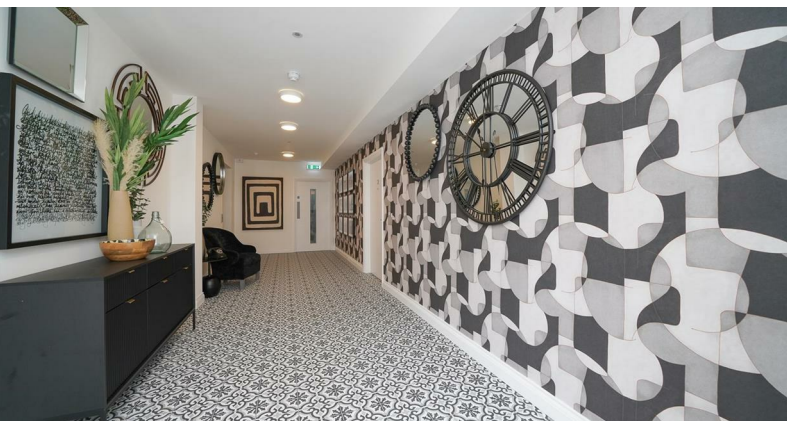
Our Property - Your Business

**ehB**  
RESIDENTIAL



**Plot 3 Hanover House, Kenilworth Street,  
Leamington Spa**

**Prices From  
£355,000**



Hanover House is a selection of just nine one, two and three bedroom, individually designed town centre apartments with parking and a lift.

Hanover House is an exclusive new development, consisting of nine high specification one, two and three bedroom apartments all individually designed to provide spacious internal layouts, 4 of which with outdoor space and all with off Street Parking.

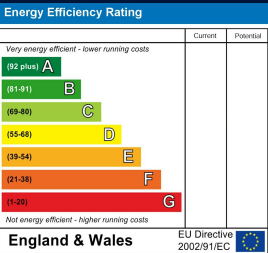
Plot 3 is a 2 bedroom 2 bathroom apartment on the first floor.

Share of Freehold Available

Range of apartments available, please enquire.

The apartments are ready to view.

Photos CGI of different apartment.



Leamington Spa Office  
Somerset House  
Clarendon Place  
Royal Leamington Spa  
CV32 5QN

01926 881144  
ehbresidential.com

Also at: 17-19 Jury Steet, Warwick, Warwickshire, CV34 4EL

- Residential Estate Agents • Lettings and Property Managers • Land and New Homes Agents



**IMPORTANT NOTICE** ehB Residential for themselves and for the Vendors of this property, whose agents they are, give notice that:- 1. The particulars are intended to give a fair and substantially correct overall description for the guidance of intending purchasers and do not constitute part of an offer or contract. Prospective purchasers and lessees ought to seek their own professional advice. 2. All descriptions, dimensions, areas, reference to condition and necessary permissions for use and occupation and other details are given in good faith, and are believed to be correct, but any intending purchasers should not rely on them as statements or representations of fact, but must satisfy themselves by inspection or otherwise as to the correctness of each of them. 3. No person in the employment of ehB Residential has any authority to make or give any representations or warranty whatever in relation to this property on behalf of ehB Residential, nor enter into any contract on behalf of the Vendor. 4. No responsibility can be accepted for any expenses incurred by intending purchasers in inspecting properties which have been sold, let or withdrawn. Measurement and other information. All measurements are approximate. While we endeavour to make our sales particulars accurate and reliable, if there is any point which is of particular importance to you, please contact this office and we will be pleased to check the information for you, particularly if contemplating travelling some distance to view the properties. 5. The agents will require identity documentation and evidence of address before entering into any transaction under money laundering regulations 2007.