

FOR
SALE

FOR SALE
JACKSON
Noon
020 8394 2555
www.jacksonnoon.com

Gibraltar Crescent, Epsom, Surrey KT19 9BT

OFFERS INVITED £525,000 - Freehold

252, Chessington Road, Ewell, Epsom, KT19 9XF 0208 394 2555 sales@jacksonnoon.com

JACKSON
Noon

PROPERTY SUMMARY

JACKSON NOON ESTATE AGENTS are pleased to offer this THREE BEDROOM CHALET BUNGALOW located in a favoured road close to EWELL WEST (ZONE 6) RAILWAY STATION and within GLYN SCHOOL CATCHMENT comprising kitchen, bathroom and shower room, double glazing, gas central heating, OFF STREET PARKING and gardens...NO CHAIN...CALL NOW TO VIEW.

POINTS OF INTEREST

- *Three Bedroom Chalet Bungalow*
- *Bathroom & Shower Room*
- *Double Glazing*
- *Gas Central Heating*
- *Front & Rear Gardens*
- *Off Street Parking*
- *Close To Ewell West Station*
- *No Chain*



ROOM DESCRIPTIONS

Front Door to

Entrance Hall

Cloaks hanging space, understairs cupboard

Lounge

15' 1" x 10' 11" (4.60m x 3.33m) Radiator, double glazed window

Kitchen

9' 2" x 8' 0" (2.79m x 2.44m) Single drainer stainless steel sink unit inset in roll top work surface, range of cupboards and units, space for fridge freezer, plumbing for dishwasher, fitted oven and hob, extractor, two double glazed windows, door to side

Bedroom 3/Dining Room

12' 5" x 8' 5" (3.78m x 2.57m) Radiator, double glazed window

Bathroom

Comprising panel enclosed bath with mixer tap and shower attachment, low level wc, wash hand basin, radiator, part tiled walls, double glazed window

Lean To

Storage area, door to front, double glazed door to rear

Stairs to First Floor

Landing

Bedroom 1

13' 3" x 13' 0" (4.04m x 3.96m) Radiator, fitted wardrobes, two double glazed windows

Bedroom 2

10' 7" x 8' 10" (3.23m x 2.69m) Radiator, double glazed window

Shower Room

Comprising shower cubicle, low level wc, wash hand basin, part tiled walls, skylight

Outside

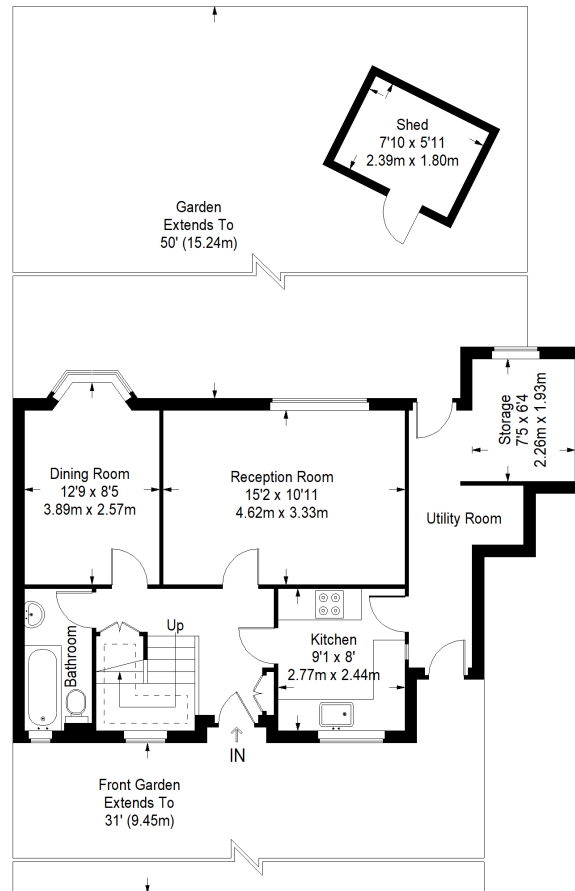
Front Garden

Laid to lawn, driveway with off street parking

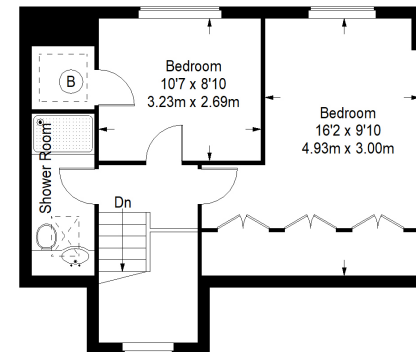
Rear Garden

Mainly laid to lawn, garden shed

Gibraltar Crescent



Ground Floor = 624 sq ft



First Floor = 425 sq ft

Approximate Gross Internal Area
 GROUND FLOOR = 624 sq ft / 57.97 sq m
 FIRST FLOOR = 425 sq ft / 39.48 sq m
 SHED = 48 sq ft / 4.46 sq m
 Total = 1097 sq ft / 101.91 sq m

This plan is for layout guidance only. Not drawn to scale unless stated. Windows and door openings are approximate. Whilst every care is taken in the preparation of this plan, please check all dimensions, shapes and compass bearings before making any decisions reliant upon them. (ID357409)