

Flat 4, 148 Merton Road, London, SW18 5SP



£1450pcm

Unfurnished

Perfect for a single person or a couple, this Victorian top floor flat would make a lovely first home, situated within walking distance of either Southfields District Line Station or Wandsworth BR Station.

- 1 bedroom
- Bathroom with shower over the bath
- Separate kitchen
- Lounge



SUMMARY

- Lounge
- Kitchen
- One Bedroom
- Bathroom

£1450pcm

THE PROPERTY

Situated on the top floor, you are lucky enough not to have anyone marching around above you, which also means you have a big sky view over South-West London.

It is a walk-up, so you won't need the addition of a gym membership, although there is a Nuffield fitness centre situated just down the road for those who like to keep super healthy.

The flat itself is very sweet, it has a good-sized living room with a fitted shelving unit, ideal for those books and family photos. The double bedroom has good 'his and hers' wardrobes, so there's no arguments over hanging space.

The bathroom is a great size and has a shower over the bath, and the kitchen is just off the lounge, which is quite handy not to be totally open plan - you can leave the dishes in the sink and retire to the sofa and ignore the mess. There is a washing machine and decent sized fridge freezer, electric hob and oven.

THE AREA

Perfect for a single person or a couple, this Victorian top floor flat would make a lovely first home, situated within walking distance of either Southfields District Line Station or Earlsfield BR Station.

The Southside Shopping Centre is within walking distance, and the very pretty King George Park with the River Wandle winding through, is literally across the road from the flat, with ponds and tennis courts, it's a beautiful piece of outside space on your doorstep.

Flat 4, 148 Merton Road, London, SW18 5SP

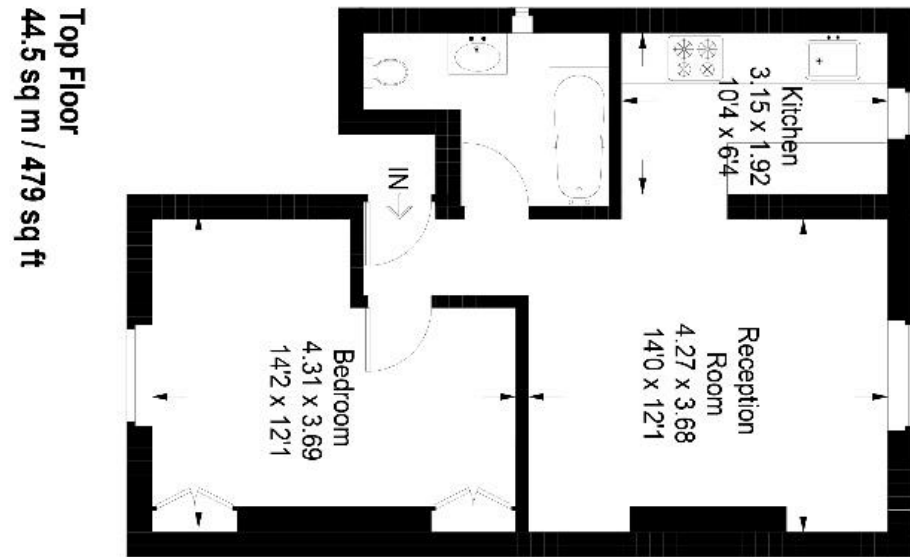
TERMS

Local Authority: Wandsworth Council

Council Tax Band : C £812.57 (2023-2024)

EPC Band : C

FLOORPLAN



Merton Road, London, SW18
Approximate Gross Internal Area
44.5 sq m / 479 sq ft



All measurements are in accordance to the RICS Code Of Measuring Practice. Measurements are approximate & only for illustrative purposes.
© Property Visual Ltd - info@propertyvisual.com - www.propertyvisual.com - 01580 241 428

57 Sheen Lane,
London SW14 8JN



020 8876 2222
village-properties.co.uk



