



Guernsey Close | | Hounslow | TW5 0PQ

£364,950

A two bedroom first floor maisonette nestled on this quiet residential cul de sac, well presented throughout and benefitting from a private garden. Perfect for first time buyers, the property has a spacious lounge, separate kitchen area, two good size bedrooms and a three piece bathroom suite. Further features include a garage, walking distance to local schools, shops and bus stops.

Tenure

Leasehold

Council Tax Band

C

Viewing Arrangements

Strictly by appointment

Contact Details

10 Central Parade

New Heston Road

Heston

Middlesex

TW5 0LH

020 8570 7258

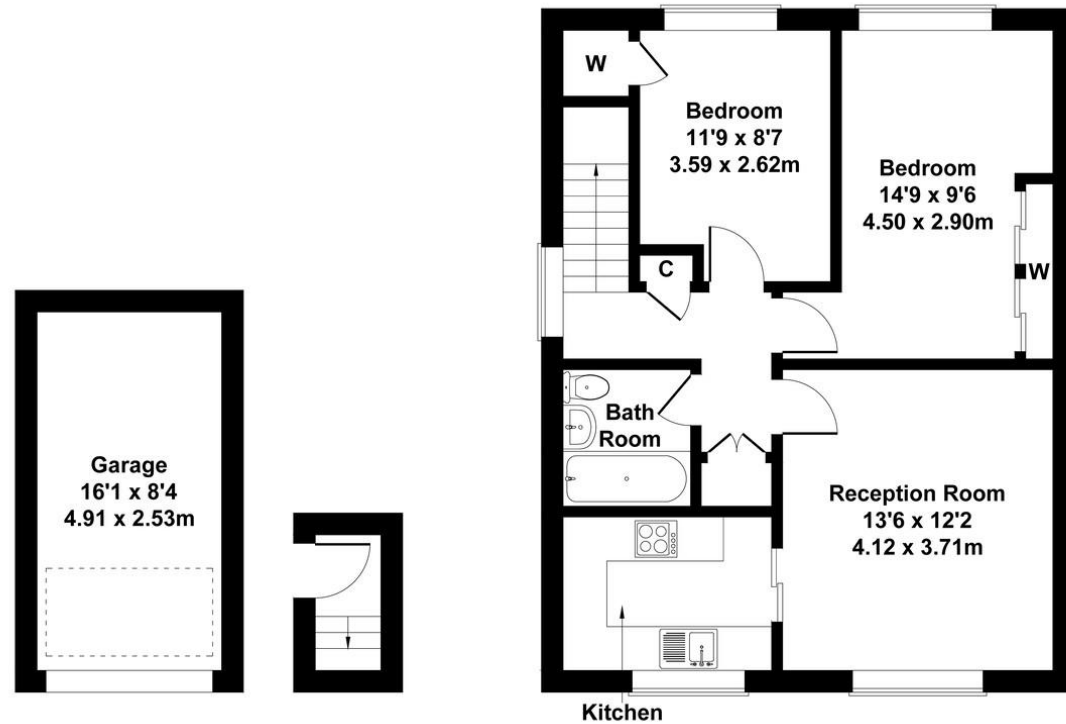
heston@shawandcoestates.com

www.shawandcoestates.com



Guernsey Close, Heston

Approximate Gross Internal Area
786 sq ft - 73 sq m
(Excluding Ground Floor)



| Score | Energy rating | Current | Potential |
|-------|---------------|---------|-----------|
| 92+ | A | | |
| 81-91 | B | | |
| 69-80 | C | 69 C | 77 C |
| 55-68 | D | | |
| 39-54 | E | | |
| 21-38 | F | | |
| 1-20 | G | | |

Agents Note: Whilst every care has been taken to prepare these particulars, they are for guidance purposes only. All measurements are approximate and for general guidance purposes only and whilst every care has been taken to ensure their accuracy, they should not be relied upon and potential buyers/tenants are advised to recheck the measurements.