



**Chandler Close**

**Southgate, West Sussex RH10 6DF**

**£1,350 Per Month**

\* Three bedroom terraced house \* quiet location \* Modern kitchen with appliances \* Walking distance to town & Crawley train station \* Good size garden \*

## Chandler Close, Southgate, West Sussex RH10 6DF

Members of the property ombudsman

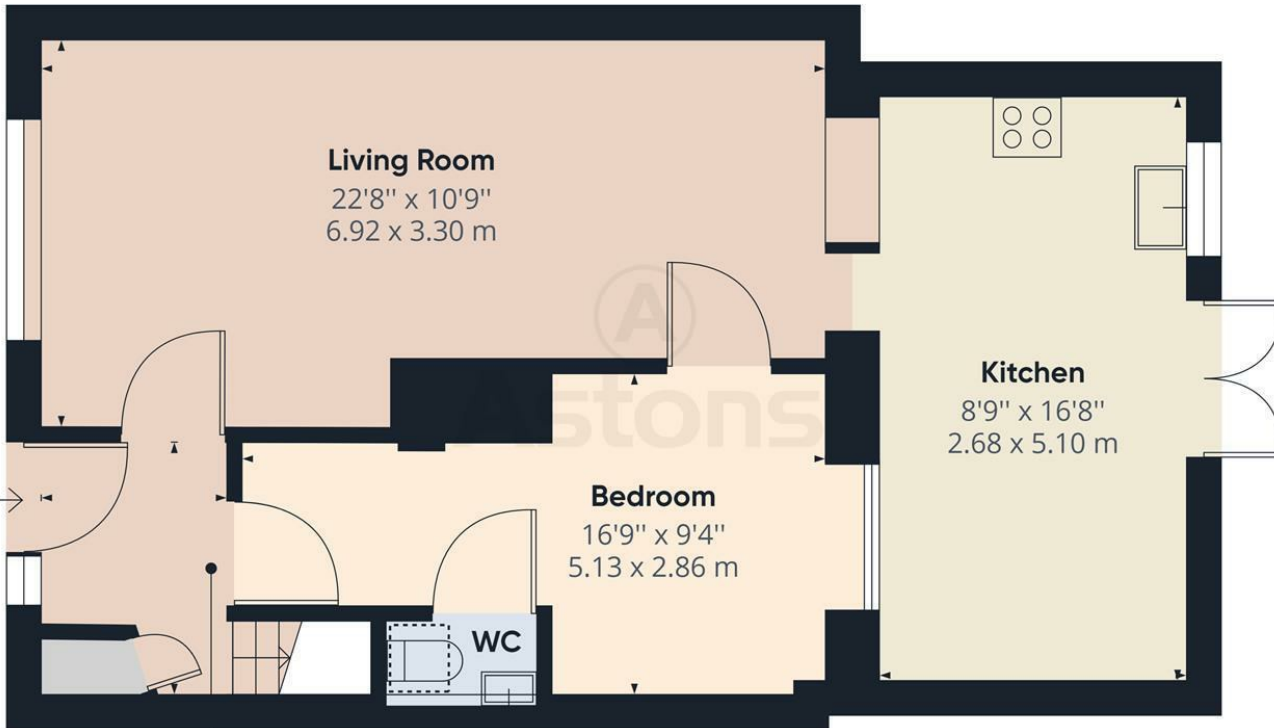
Members of CMP for client money protection

holding deposit equivalent of one week rent

security deposit equivalent 5 weeks rent

reservation deposit equivalent of one weeks rent





**Approximate total area<sup>(1)</sup>**  
 578.31 ft<sup>2</sup>  
 53.73 m<sup>2</sup>

**Reduced headroom**  
 3.32 ft<sup>2</sup>  
 0.31 m<sup>2</sup>

(1) Excluding balconies and terraces

Reduced headroom (below 1.5m/4.92ft)

While every attempt has been made to ensure accuracy, all measurements are approximate, not to scale. This floor plan is for illustrative purposes only.

GIRAFFE360

Ground Floor

Energy Efficiency Rating		Current	Potential
Very energy efficient - lower running costs			
(92 plus) <b>A</b>			
(81-91) <b>B</b>			
(69-80) <b>C</b>			
(55-68) <b>D</b>			
(39-54) <b>E</b>			
(21-38) <b>F</b>			
(1-20) <b>G</b>			
Not energy efficient - higher running costs			
<b>England &amp; Wales</b>		71	83
	EU Directive 2002/91/EC		

Environmental Impact (CO <sub>2</sub> ) Rating		Current	Potential
Very environmentally friendly - lower CO <sub>2</sub> emissions			
(92 plus) <b>A</b>			
(81-91) <b>B</b>			
(69-80) <b>C</b>			
(55-68) <b>D</b>			
(39-54) <b>E</b>			
(21-38) <b>F</b>			
(1-20) <b>G</b>			
Not environmentally friendly - higher CO <sub>2</sub> emissions			
<b>England &amp; Wales</b>		68	80
	EU Directive 2002/91/EC		