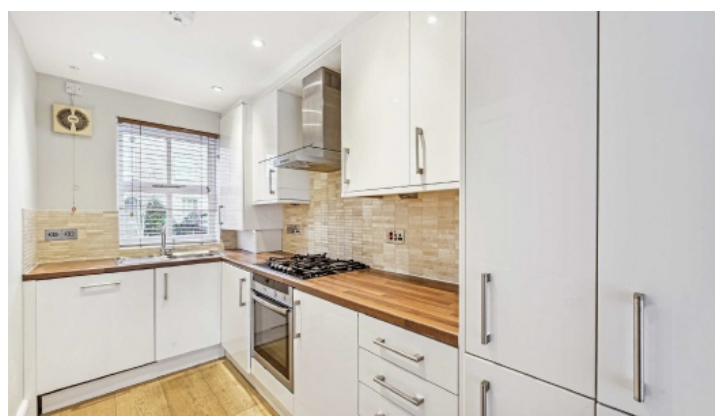


FLETCHERS

ESTATE AGENTS



Bridge Street, W4

£807 Per week (£3,500 pcm)

A three double bedroom house with off street parking. The property has a modern kitchen, large double reception room with bi-folding doors leading to a large private garden and an en suite off the master bedroom.

The property is close to all the shops and restaurants of Chiswick High Road as well and Chiswick Park and Turnham Green tube stations.

• Belmont Catchment • Three Double Bedrooms • Off Street Parking • Large Private Garden • Modern Kitchen • Great Location •

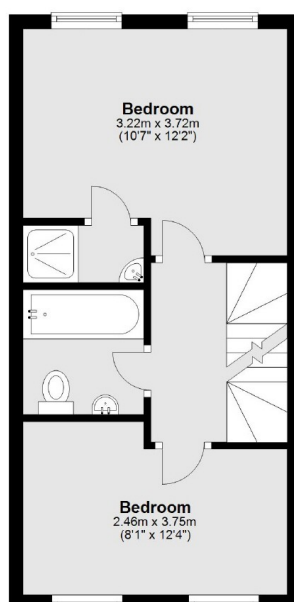
FLETCHERS

ESTATE AGENTS

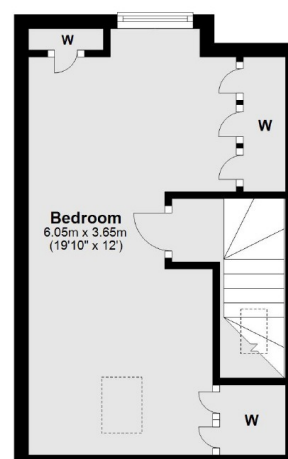
Ground Floor



First Floor



Second Floor



Total area: approx. 93.4 sq. metres (1005.1 sq. feet)

Fletchers Chiswick High Road Lettings
86 Chiswick High Road, Chiswick, London, W4 1SY
020 8742 4100
chiswicklettings@fletcherstates.com

Energy Rating: C. We aim to make our particulars both accurate and reliable. However they are not guaranteed; nor do they form part of an offer or contract. If you require clarification on any points then please contact us, especially if you're traveling some distance to view. Please note that appliances and heating systems have not been tested and therefore no warranties can be given as to their good working order.