



Seaford Road, W13

£625,000

****OFFERS IN EXCESS OF****

An immaculately presented three double bedroom split level first floor flat with a secluded private garden.

Offering over 100Sq.M and filled with natural light throughout, a must for early viewing.



Ideally located for transport links, schools and an array of well regarded shops and restaurants on Northfield Avenue.

The accommodation comprises three double bedrooms (the principle bedroom with an en suite shower room), a light filled front reception room and an additional kitchen/dining area to the rear.

Direct access to the sun trapped secluded garden.

West Ealing Station (Crossrail) and Northfields Station (Piccadilly Line) both within walking distance of the flat. Elthorne, Lammas and Walpole parks all providing an excellent outdoor family amenity.

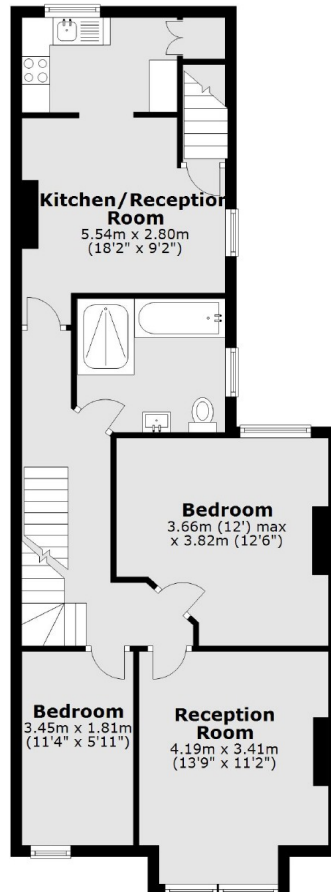
- Three Double Bedrooms • Over 100 Sq.M. • Excellent Location •
- Well Regarded Schools • Secluded Garden • Choice Of Transport Links •



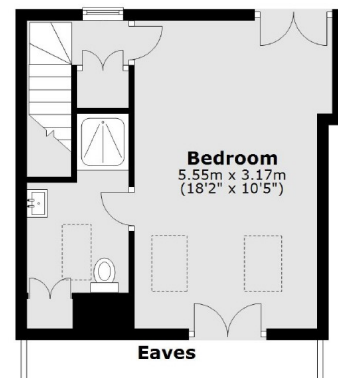
Ground Floor



First Floor



Second Floor



Total area: approx. 101.1 sq. metres (1088.3 sq. feet)

Robertson Smith & Kempson Northfields Sales
116 Northfield Avenue,
London, W13 9RT
020 8566 2340
northfieldssales@robertsonsmithandkempson.co.uk

Energy Rating: D. We aim to make our particulars both accurate and reliable. However they are not guaranteed; nor do they form part of an offer or contract. If you require clarification on any points then please contact us, especially if you're traveling some distance to view. Please note that appliances and heating systems have not been tested and therefore no warranties can be given as to their good working order.