



Vant Road, SW17

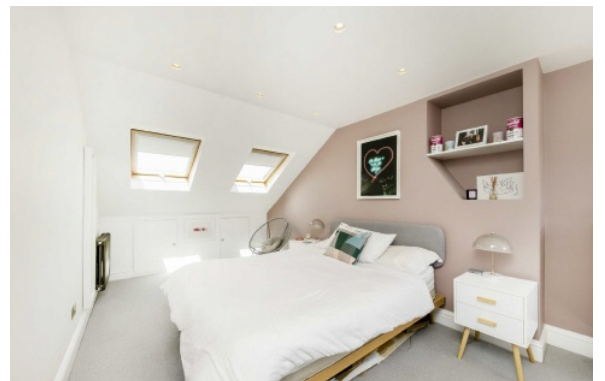
£1,350,000

A beautifully presented family home in one of Tooting's most desirable locations with five large bedrooms, three bathrooms, off street parking, a large private south facing garden and roof-terrace.

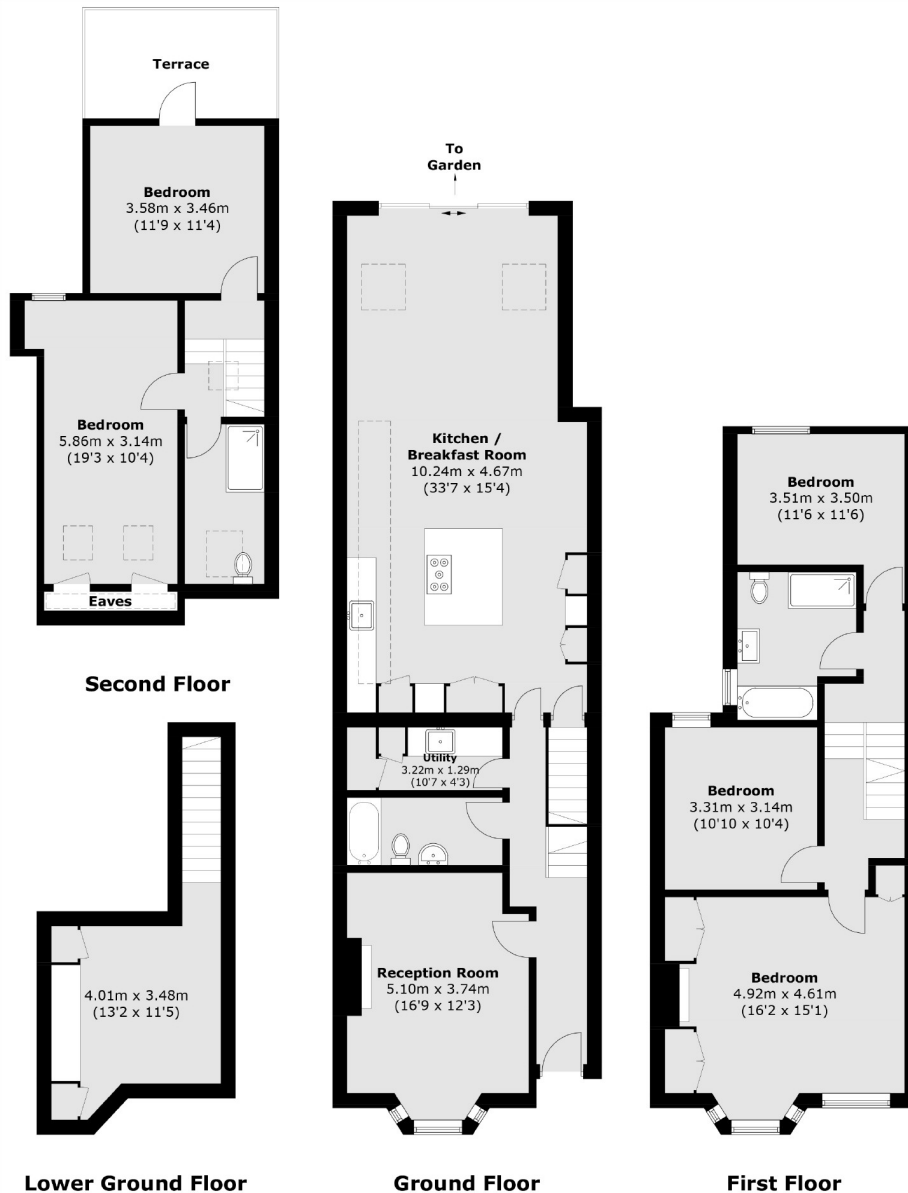
- Victorian Family Home
- Over 2000 sq. ft
- Large South Facing Garden
- Downstairs WC & Utility Room
- Off Street Parking
- Private Roof Terrace



The property is ideally situated for Tooting Broadway Underground and Tooting mainline station and an excellent selection of private and state schools. The green open spaces of both Tooting Bec Common and Wandsworth Common are easily accessible as are the shops, bars and restaurants of both of these areas.







Total area (approx.): 202 sq. m (2,174.1 sq. ft)
(Excluding Eaves)
Terrace area: 8.9 sq. m (95.7 sq. ft)

Jacksons Tooting
26 Tooting Bec Road
London
SW17 8BD
020 8767 0522
tooting.sales@jacksonsestateagents.com

Energy Rating: We aim to make our particulars both accurate and reliable. However they are not guaranteed; nor do they form part of an offer or contract. If you require clarification on any points then please contact us, especially if you're traveling some distance to view. Please note that appliances and heating systems have not been tested and therefore no warranties can be given as to their good working order.