

3 Roseheath Road | | Hounslow | TW4 5HH

£674,950

A three bedroom detached house in need of complete modernising, however at the same time offering great potential and spacious accommodation throughout. Rarely available on this no through road the property has two reception rooms, kitchen, a downstairs shower room as well as an upstairs bathroom. Conveniently located the property is within easy access to local bus stops, schools and shops.

Tenure

Freehold

Council Tax Band

C

Viewing Arrangements

Strictly by appointment

Contact Details

10 Central Parade

New Heston Road

Heston

Middlesex

TW5 0LH

020 8570 7258

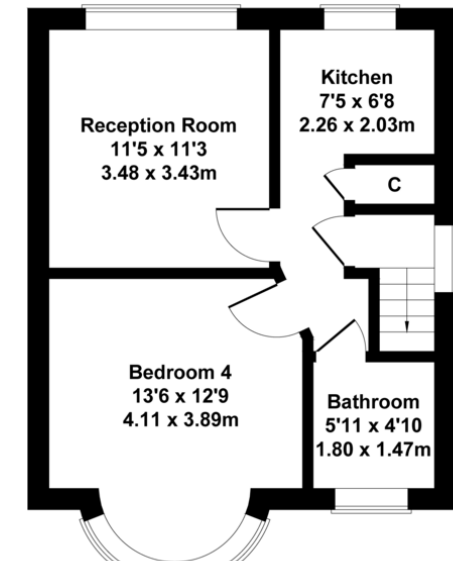
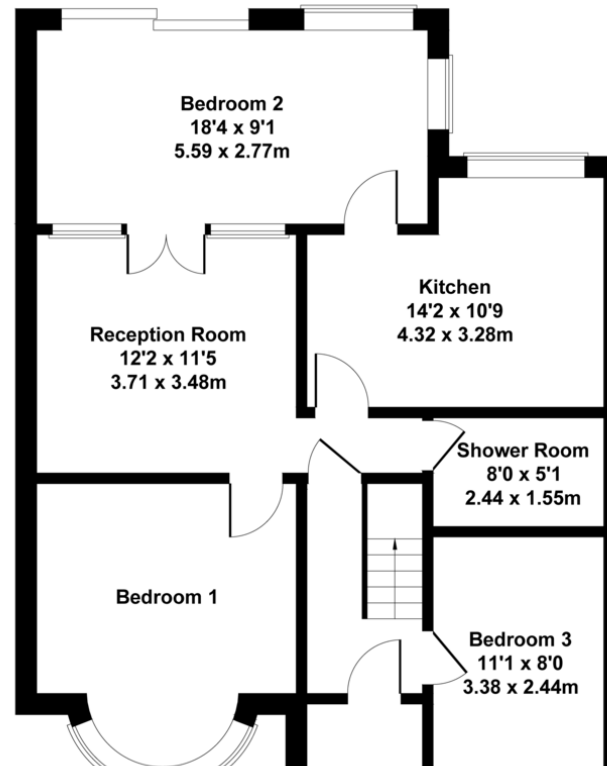
heston@shawandcoestates.com

www.shawandcoestates.com

Shaw & Co
ESTATE AGENTS

Roseheath Road

Approximate Gross Internal Area
1248 sq ft - 116 sq m



%epcGraph_c_1_349%

Agents Note: Whilst every care has been taken to prepare these particulars, they are for guidance purposes only. All measurements are approximate and for general guidance purposes only and whilst every care has been taken to ensure their accuracy, they should not be relied upon and potential buyers/tenants are advised to recheck the measurements.