



Ifield Green
Ifield Green, West Sussex RH11 0ND

Guide Price £775,000

*** Guide Price £775,000 - £825,000 ***

Astons are delighted to market this beautifully presented detached Victorian family home. Situated in the ever-popular village of Ifield Green, within walking distance of Ifield station and other local amenities. Inside this must-see home offers wonderful accommodation throughout, featuring three reception rooms, a fitted kitchen/breakfast room, a utility room, three fitted bathrooms, five double bedrooms with the master bedroom boasting a dressing room. To the rear is a spectacular, secluded garden which has a southerly aspect. Tenure Freehold, EPC Rating E (51), Council Tax Band 'F'.



Entrance Hallway

Front door opening to hallway which features oak wood flooring, stairs to first floor landing, radiator, coving, access to understairs storage cupboard, doors to:

Family Room

Sash bay window, feature gas fireplace, radiator, coving.

Living Room

Sash bay window, feature gas fireplace, radiator, coving, opening to:



Dining Room

Sash window to rear aspect, oak wood flooring, radiator, coving, door to:



Kitchen/Breakfast Room

Fitted kitchen with a range of units at base and eye level, space and power for range cooker, butler sink with mixer-tap, oak worktops, tile effect vinyl flooring, radiator, coving, patio door to rear garden, door to:



Utility Room

Fitted with space, power and plumbing for washing machine, tumble dryer, fridge and freezer, wall mounted gas fire boiler, roll top worksurfaces, butler sink, tile effect vinyl flooring, window to rear aspect, door to:

Downstairs Bathroom

White suite comprising of w/c, wash hand basin with pedestal, panel enclosed bathtub with shower unit, radiator, extractor fan, obscure window to rear aspect, part tiled walls, tile effect vinyl floor.

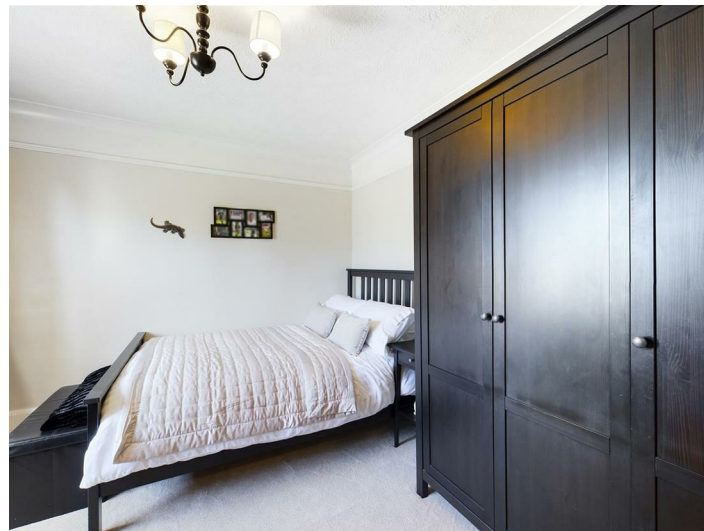


Landing

With coving, radiator, stairs to second floor, doors to:

Bedroom Four

Sash window to rear aspect, coving, radiator.



Bedroom Three

Sash window to rear aspect, coving, radiator.



Family Bathroom

White three-piece suite comprising of w/c, wash hand basin with pedestal, corner bathtub with mixer-tap and shower unit, radiator, sash window to rear aspect, coving, tile effect vinyl flooring.





Bedroom Two

Sash window to front aspect, radiator, coving.



Second Floor Landing

Double glazed windows to rear aspect, doors to:

Bedroom Five

Velux windows to rear aspect, radiator, access to eave storage.



To The Rear

Secluded garden with decking area adjacent to property, patio path leading to summer house with power, lawn garden with access to garden shed, hedges and trees to borders.



Bedroom One

Sash window to front aspect, coving, radiator, opening to dressing room with sash window to front aspect and radiator.



Study/Playroom

Obscure double-glazed window to rear aspect, radiator.

Second Floor Bathroom

Fitted white four-piece suite comprising of w/c, wash hand basin with pedestal, walk in shower with shower unit, free standing bath, wood effect vinyl flooring, extractor fan, radiator, obscure double-glazed window, velux window to rear aspect.



To The Front

Gravel driveway offering parking for multiple vehicles, lawn front garden with range of trees and hedges to borders.

