



Ritherdon Road, SW17

£6,100 PCM

A large five bedroom house offering generous living space throughout, the property also comprises of four bathrooms, open plan living space and a private garden.

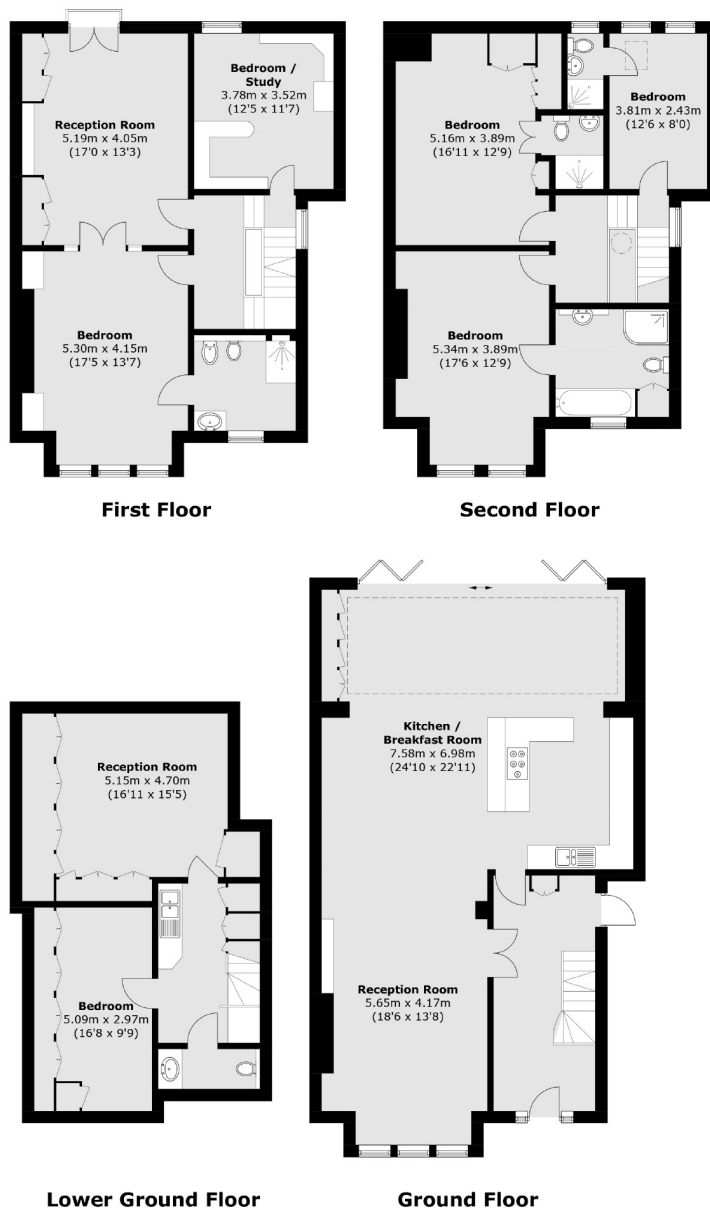
- Terraced House
- Large Open Plan Living
- Five Bedrooms
- Four Bathrooms
- Private Garden
- Part Furnished

For further information on the costs associated with renting a property, please pop into our office or visit our website.



This highly desirable house is presented in immaculate condition throughout. Located in the popular Heaver Estate the property comprises: on the ground floor, a bright open plan reception room which leads into a larger than average kitchen/ breakfast room with a conservatory at the rear with bi-fold doors leading onto a well maintained garden, stairs leading to a w/c and a basement room. The remaining property spans across a further two floors consisting of five double bedrooms with dressing room to master, a study and four en-suite bathrooms.





Total area (approx.): 300.0 sq. m (3,229.2 sq. ft)

Jacksons Balham
8-11 Balham Station Road
London
SW12 9SG
020 8675 6565
balham.lettings@jacksonsestateagents.com

Energy Rating: TBC We aim to make our particulars both accurate and reliable. However they are not guaranteed; nor do they form part of an offer or contract. If you require clarification on any points then please contact us, especially if you're traveling some distance to view. Please note that appliances and heating systems have not been tested and therefore no warranties can be given as to their good working order.