

ehB
RESIDENTIAL

Your Property - Our Business



11, Muntjac Drive, Stratford upon Avon

Price Guide
£685,000



Award-winning builders Spitfire Homes recently constructed this impressive, four-bedroom townhouse. The former Showhouse boasts a high standard of specification throughout, incorporating Neff appliances, Villeroy & Boch suites, hansgrohe showers, and Pocolanosa tiling. Reception hall, guest cloakroom, spacious living room, dining kitchen, three first floor bedrooms, accompanied by a luxury family bathroom, top floor bedroom suite approached by a study area, with private balcony, dressing area, and a luxury en-suite. There is a landscaped south-facing garden, a long driveway, and a generous single garage. Energy rating B

Location

Muntjac Drive is located just off Loxley Road and forms part of a select development known as Consilio, which is a collection of

individually designed residences by master builders Spitfire Homes, Stratford-upon-Avon is a fantastic location with a wealth of amenities and plenty of activities for all ages. It is considered the region's cultural centre being Shakespeare's birthplace and home to the Royal Shakespeare Company. All your daily needs are well catered for on the High Street with household names such as Marks and Spencer & Boots, alongside locally-run boutique shops. There are two major supermarkets just a short drive away and The Maybird centre provides additional shopping facilities. For the active, there is a well-equipped leisure centre complete with a swimming pool. The town also has a golf course and race course and there are further race courses at Cheltenham and Warwick. The area is well served by schools including The Croft Prep School, King Edward Grammar

School for Boys, Shotton Grammar School for Girls, and Stratford High School. Warwick and Leamington Spa are also nearby and provide additional shopping facilities and schools including Warwick Boys School, Warwick Prep School, and King's High School in Warwick and in Leamington Spa, Kingsley School for Girls, and Arnold Lodge School. Stratford offers great connections by both road and rail providing good access for the commuter or the adventurer with easy access to the M40 and Stratford Parkway, Stratford-upon-Avon Station as well as a short 20-minute drive from Warwick Parkway Station.

Reception Hall

Coir matt, porcelain tiled floor with underfloor heating, downlighters, touch control digital thermostat. Understairs communication/storage cupboard with power and light. Oak doors with chrome furniture lead to:





Guest Cloakroom

Having a Villeroy & Bosch white suite comprising WC with a concealed push button system, vanity wash hand basin with storage beneath, downlighters, matching tiled floor, and a double glazed window to front aspect.

Spacious Living Room

17'10" x 19'1" narrowing to 13'6" (5.46m x 5.82m narrowing to 4.12m) With the continuation of the matching tiled floor with underfloor heating, two ceiling light points, full height, bespoke storage wall providing ample shelving and cloaks/storage space. Wall mounted touch control thermostat, two internal glazed screens to the kitchen enabling the flow of natural light, Two double glazed windows to the rear aspect, and double glazed bi-fold doors provide access to the landscaped rear garden.

Dining Kitchen

16'3" x 9'10" (4.97m x 3.00m) Which has a sleek range of base and eye-level units with marble worktops and upturns. Inset Abode stainless steel sink unit with mixer tap. Integrated dishwasher and washer dryer, Neff induction hob with a concealed pull-out extractor system over. Neff electric oven and combination oven over, integrated fridge/freezer. Downlighters, matching tiled floor with underfloor heating, and a double glazed window to the front aspect.

From the Reception Hall, stairs with Oak and glass balustrade rise to:

First Floor Landing

Built-in Linen Cupboard with electric light and bespoke storage shelving, downlighters. Oak doors to:

Bedroom Two

12'0" x 10'5" (3.68m x 3.20m) Built-in full height mirror fronted wardrobes and a double glazed full height window to the front aspect.

Bedroom Three/Second Sitting Room

10'7" x 10'5" (3.25m x 3.20m) Having a built-in display/storage wall with space for a wall-mounted TV, radiator, and a double glazed window to the rear aspect.

Bedroom Four

10'0" x 7'1" (3.06m x 2.17m) Radiator, TV aerial point, and a double glazed window to rear aspect.

Family Bathroom

Villeroy & Bosch suite comprising wall hung wash hand basin, WC



with a concealed push button cistern, bath with Hansgrohe mixer tap and shower attachment, glass shower screen. Complementary tiled splashbacks and floor, flush mirrored medicine cabinet with an illuminated display area beneath, shaver point, downlighters, and extractor fan.

[Study Area](#)

8'2" x 7'1" (2.49m x 2.16)

Radiator, downlighter, double glazed window to front aspect, and a matching Oak staircase with glass balustrade rises to the:

[Top Floor Primary Bedroom Suite](#)

15'3" x 13'5" (4.66m x 4.10m)

This impressive bedroom features a high angled ceiling, radiator, TV aerial point, built-in storage cupboard with bespoke fitting shelving,

ceiling light point, and digital thermostat control. Opening to the Dressing Area and double-glazed, double-opening doors with matching side screens allow access to the:

[Private Balcony](#)

Enjoying elevated views towards the recreation area and countryside beyond, With an overhang and a composite deck floor, external light, and a galvanized steel and glass balustrade.

[Dressing Area](#)

9'6" x 5'8" (2.92m x 1.75m)

Built-in full height mirror fronted sliding door wardrobes providing ample hanging rail and storage space, double glazed window to the rear aspect. Door to:

[Luxury En-Suite](#)

Villeroy & Bosch white suite comprising wall hung wash hand basin, WC with a concealed push button cistern, mirrored medicine cabinet with an illuminated display area beneath, shaver point. Chrome heated towel rail, complementary tiled walls, and floor. Large wide tiled shower enclosure with hansgrohe shower system and a glass sliding folding shower screen. Door to:

[Walk-In Eaves Storage Area](#)

With storage shelf and hanging rail below, ceiling light point.

[Outside](#)

There is a generous driveway to the side and a pedestrian gate leads to the rear garden

[Single Garage](#)

Having an electric door with an electric car charging point.





[Landscaped Rear Garden](#)

Which enjoys a southerly aspect, with attractive grey paving, lawned section, and low maintenance stocked borders.

[Tenure](#)

The property is understood to be freehold although we have not inspected the relevant documentation to confirm this.

[Services](#)

All mains services are understood to be connected to the property including gas. NB We have not tested the central heating, domestic hot water system, kitchen appliances, or other services, and whilst believing them to be in satisfactory working order we cannot give any warranties in these respects. Interested parties are invited to make their own enquiries.

[Post Code](#)

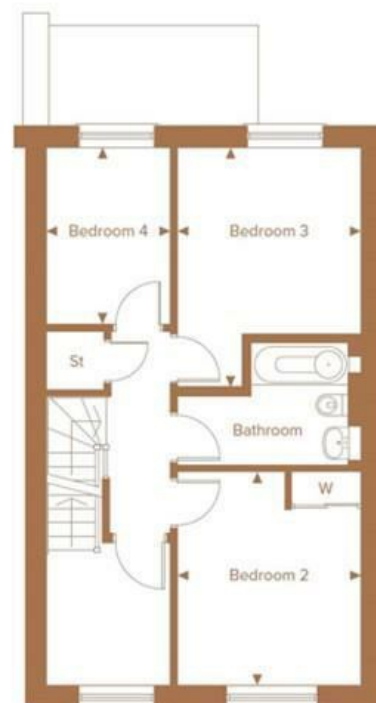
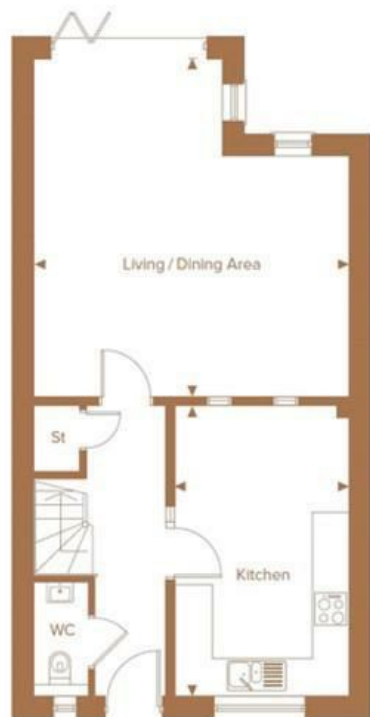
CV37 7FN

[Council Tax](#)

Band "F" Stratford District Council

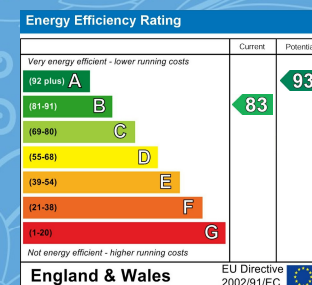


- Residential Estate Agents •
- Lettings and Property Managers •
- Land and New Homes Agents •



Warwick Office
17-19 Jury Street
Warwick
CV34 4EL

☎ 01926 499540 🌐 ehbresidential.com



Also at: Leamington Spa, Somerset House,
Clarendon Place, Royal Leamington Spa CV32 5QN

IMPORTANT NOTICE ehB Residential for themselves and for the Vendors of this property, whose agents they are, give notice that:- 1. The particulars are intended to give a fair and substantially correct overall description for the guidance of intending purchasers and do not constitute part of an offer or contract. Prospective purchasers and lessees ought to seek their own professional advice. 2. All descriptions, dimensions, areas, reference to condition and necessary permissions for use and occupation and other details are given in good faith, and are believed to be correct, but any intending purchasers should not rely on them as statements or representations of fact, but must satisfy themselves by inspection or otherwise as to the correctness of each of them. 3. No person in the employment of ehB Residential has any authority to make or give any representations or warranty whatever in relation to this property on behalf of ehB Residential, nor enter into any contract on behalf of the Vendor. 4. No responsibility can be accepted for any expenses incurred by intending purchasers in inspecting properties which have been sold, let or withdrawn. Measurement and other information. All measurements are approximate. While we endeavour to make our sales particulars accurate and reliable, if there is any point which is of particular importance to you, please contact this office and we will be pleased to check the information for you, particularly if contemplating travelling some distance to view the properties. 5. The agents will require identity documentation and evidence of address before entering into any transaction under money laundering regulations 2007.