



3 bed option available

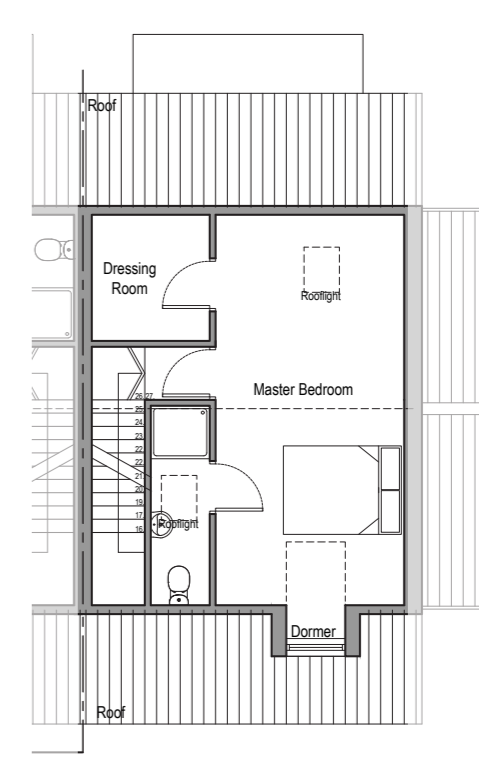
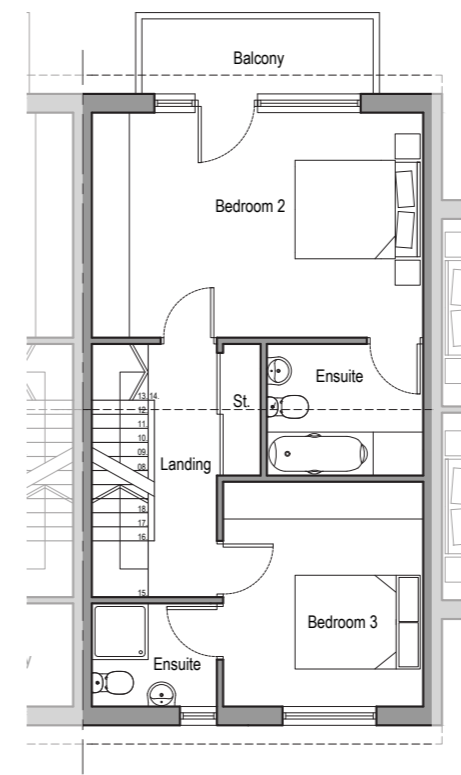
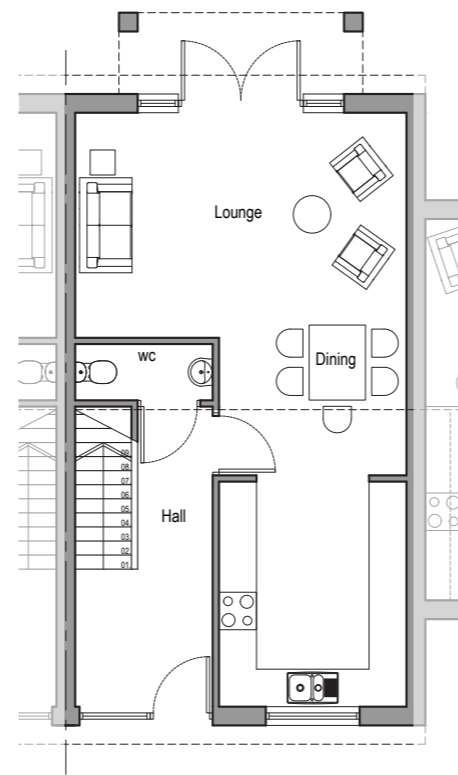
# THE GREEN

## WALTHAM

### 2.5 Mews

### 3 Bedroom Terrace

GROUND FLOOR	W(m)xH(m)	W(')xH(')
Kitchen/dining	3.000mx5.900m	9'10"x19'4"
Lounge	5.300mx3.600m	17'5"x11'10"
FIRST FLOOR		
Bedroom 2	5.300mx3.600m	17'5"x11'10"
Bedroom 3	3.595mx3.200m	11'10"x10'6"
SECOND FLOOR		
Master Bedroom	6.625mx3.200m	21'9"x10'6"
Dressing Room	2.140mx2.000m	7'0"x6'7"



Details are given as a general guide and are subject to alteration. The plans shown are not to scale and the dimensions should be used for reference only and should not be relied on for ordering carpets and furniture. For individual plot details please contact Canters. These details do not represent any contractual offer or obligation on behalf of Canters.



# THE GREEN

WALTHAM

## Site Plan











Details are given as a general guide and are subject to alteration. The plans shown are not to scale and the dimensions should be used for reference only and should not be relied on for ordering carpets and furniture. For individual plot details please contact Canters. These details do not represent any contractual offer or obligation on behalf of Canters.



# THE GREEN WALTHAM

## Development Layout

KEY:

-  Bungalow Type A
-  Bungalow Type B
-  Detached Type A
-  Semi-Detached Type A
-  1.5 Mews
-  2.5 Mews
-  Townhouse
-  Cottage



Cheapside

Details are given as a general guide and are subject to alteration. The plans shown are not to scale and the dimensions should be used for reference only and should not be relied on for ordering carpets and furniture. For individual plot details please contact Canters. These details do not represent any contractual offer or obligation on behalf of Canters.

