

FLETCHERS

ESTATE AGENTS



Woodstock Road, W4

£1,615 Per week

A five bedroom family home in the Bedford Park with over 1980 sqft and a private west facing garden. Further includes a double reception room with wood flooring, period features and feature fire place. There is also a modern high spec kitchen/breakfast room, two bath/shower rooms and built in storage.



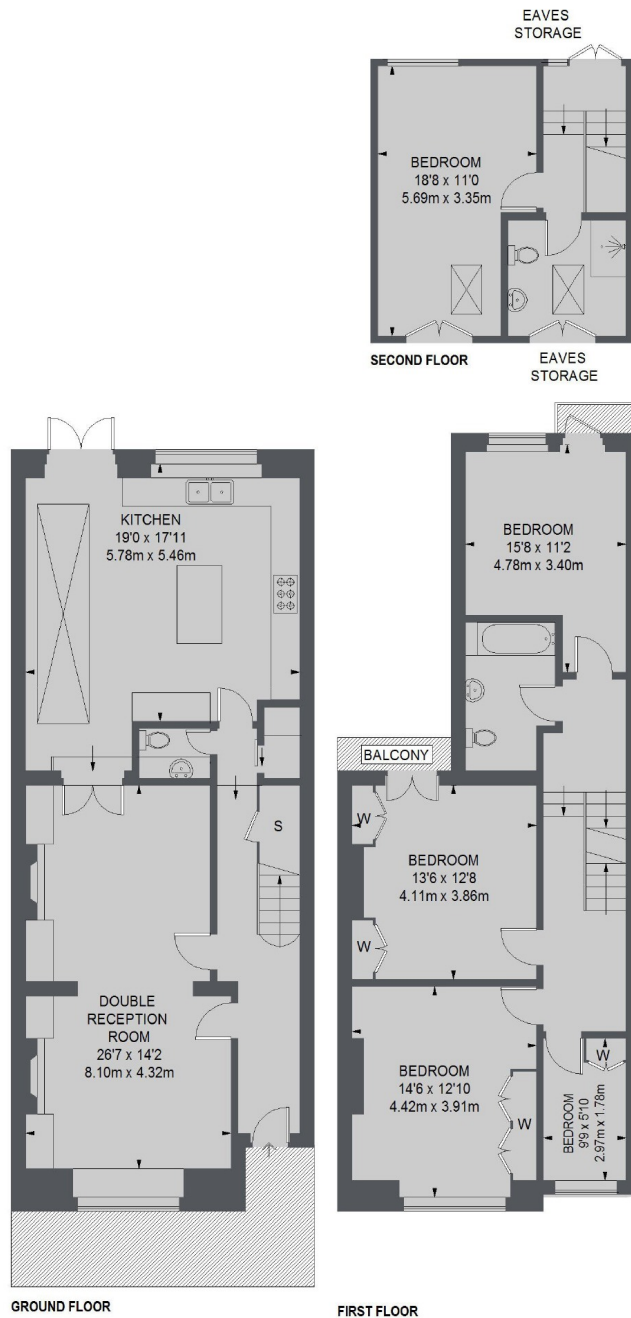
Woodstock Road is located within the quiet and highly sought after Bedford Park conservation area, within 400 metres of Turnham Green underground station, the Terrace and the multitude of shops, cafes and restaurants along Chiswick High Road.

- Five Bedrooms • Double Reception Rooms • Bedford Park •
- Juliette Balcony • Recently Refurbished • Private West Facing Garden •



FLETCHERS

ESTATE AGENTS



TOTAL APPROX. FLOOR AREA 1988 SQ. FT. (184.72 SQ. M.)

Fletchers Chiswick High Road Lettings
86 Chiswick High Road
Chiswick
London
W4 1SY
020 8742 4100

Energy Rating: D We aim to make our particulars both accurate and reliable. However they are not guaranteed; nor do they form part of an offer or contract. If you require clarification on any points then please contact us, especially if you're traveling some distance to view. Please note that appliances and heating systems have not been tested and therefore no warranties can be given as to their good working order