



**Watery Lane, Redditch B98 7AN**



**welcome to**

**Watery Lane, Redditch**

SEMI-DETACHED, LOUNGE, KITCHEN, THREE BEDROOMS, FAMILY BATHROOM, REAR GARDEN & DRIVEWAY



**Entrance Porch**

Single glazed door to front and single glazed obscure window to front.

**Entrance Hall**

Central heating radiator.

**Lounge**

10' 4" Max x 12' Max not into bay ( 3.15m Max x 3.66m Max not into bay )  
Double glazed bay window to front, fire and central heating radiator.

**Kitchen**

14' 11" Max x 10' 6" Max ( 4.55m Max x 3.20m Max )  
Double glazed window to side and double glazed window and door to rear. Wall and base units, sink with mixer tap, integrated electric oven with gas hob, space for washing machine and fridge freezer.

**Landing**

Double glazed obscure window to side and loft access.

**Bedroom One**

11' 10" x 9' ( 3.61m x 2.74m )  
Double glazed window to front, fitted wardrobes and central heating radiator.

**Bedroom Two**

10' 7" Max x 9' 1" Max ( 3.23m Max x 2.77m Max )  
Double glazed window to rear and central heating radiator.

**Bedroom Three**

5' 6" x 7' 7" ( 1.68m x 2.31m )  
Double glazed obscure window to front and central heating radiator.

**Bathroom**

Double glazed obscure window to side, basin with mixer tap, corner bath with wall mounted electric shower, close coupled toilet, tiles to splash prone areas and boiler.

**Front**

Driveway

**Rear Garden**

Grass/patio, rear gate access and side to front.



***view this property online*** [shipways.co.uk/Property/RDC108391](https://shipways.co.uk/Property/RDC108391)



**welcome to**

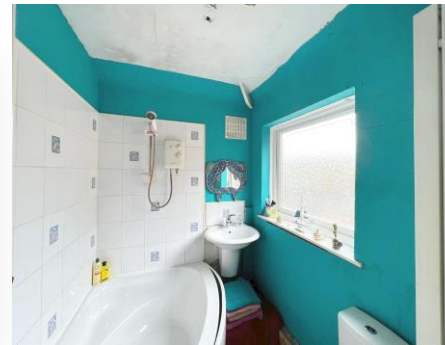
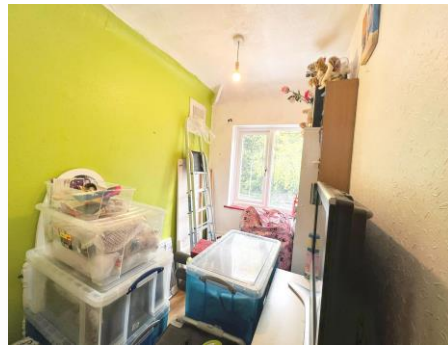
## **Watery Lane, Redditch**

- SEMI-DETACHED
- LOUNGE
- KITCHEN
- THREE BEDROOMS
- FAMILY BATHROOM

Tenure: Freehold EPC Rating: D

fixed price

**£250,000**



Please note the marker reflects the postcode not the actual property

**view this property online** [shipways.co.uk/Property/RDC108391](https://shipways.co.uk/Property/RDC108391)



Property Ref:  
RDC108391 - 0009

1. MONEY LAUNDERING REGULATIONS Intending purchasers will be asked to produce identification documentation at a later stage and we would ask for your co-operation in order that there is no delay in agreeing the sale. 2. These particulars do not constitute part or all of an offer or contract. 3. The measurements indicated are supplied for guidance only and as such must be considered incorrect. Potential buyers are advised to recheck measurements before committing to any expense. 4. We have not tested any apparatus, equipment, fixtures or services and it is in the buyers interest to check the working condition of any appliances. 5. Where an EPC, or a Home Report (Scotland only) is held for this property, it is available for inspection at the branch by appointment. If you require a printed version of a Home Report, you will need to pay a reasonable production charge reflecting printing and other costs. 6. We are not able to offer an opinion either written or verbal on the content of these reports and this must be obtained from your legal representative. 7. Whilst we take care in preparing these reports, a buyer should ensure that his/her legal representative confirms as soon as possible all matters relating to title including the extent and boundaries of the property and other important matters before exchange of contracts.

Shipways is a trading name of Sequence (UK) Limited which is registered in England and Wales under company number 4268443, Registered Office is Cumbria House, 16-20 Hockliffe Street, Leighton Buzzard, Bedfordshire, LU7 1GN. VAT Registration Number is 500 2481 05.

  
shipways



**01527 65155**



[redditch@shipways.co.uk](mailto:redditch@shipways.co.uk)



3 Alcester Street, REDDITCH, Worcestershire,  
B98 8AE



**[shipways.co.uk](https://shipways.co.uk)**