



Bartholomew Close, SW18

£800,000

An immaculately presented three bedroom family house which enjoys a private rear garden, off street parking and is ideally located for Wandsworth Town, being offered chain free.

- Freehold House
- Three Bedrooms
- Open Plan Living Space
- Chain Free
- Private Garden
- Off Street Parking

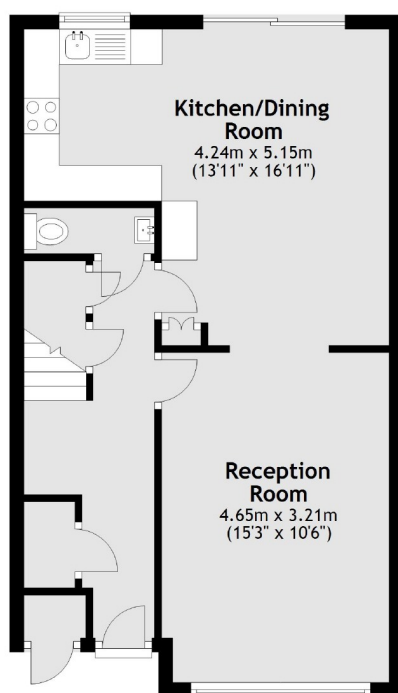
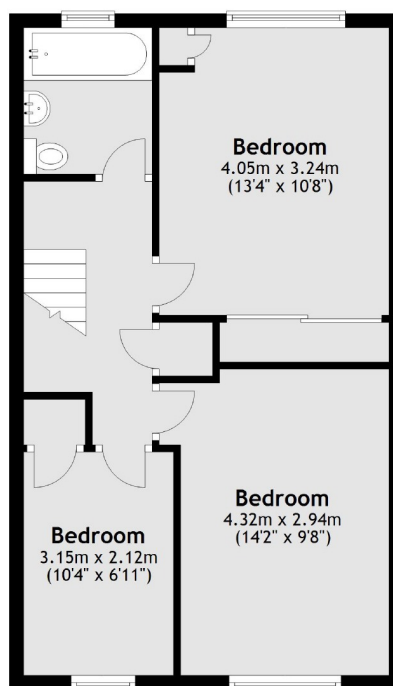


The property comprises; generous hallway with ample storage and guest w/c, a modern fitted kitchen which is open plan to the dining room, creating a wonderful family space, bright reception room with sliding doors allowing the space to be closed off or fully opened for entertaining. To the first floor there are two generous double bedrooms, a single bedroom and a generous modern bathroom. The property also benefits from a private low maintenance garden, large loft space and an off-street parking space.

Bartholomew Close is a quiet cul-de-sac located 0.4 miles to Wandsworth Town station and 0.7 miles to Clapham Junction mainline station. Wandsworth's Southside shopping centre is only 0.9 miles away with a fantastic array of shops, restaurants and bars. A great selection of popular local pubs such as The Alma and The Ship are also within half a mile.





Ground Floor

First Floor


Total area: approx. 93.1 sq. metres (1002.5 sq. feet)

Jacksons Earlsfield
372-374 Garratt Lane
Earlsfield
London
SW18 4ES
020 8971 7979

Energy Rating: We aim to make our particulars both accurate and reliable. However they are not guaranteed; nor do they form part of an offer or contract. If you require clarification on any points then please contact us, especially if you're traveling some distance to view. Please note that appliances and heating systems have not been tested and therefore no warranties can be given as to their good working order.