

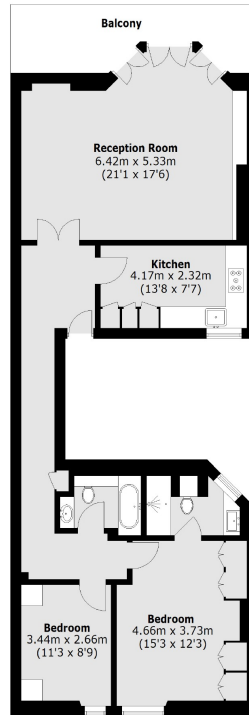


GREEN STREET

MAYFAIR W1K



THIS BEAUTIFUL RENOVATED, LATERAL APARTMENT IS SITUATED ON THE FIRST FLOOR OF A PERIOD RED BRICK BUILDING, WITH EXCELLENT CEILING HEIGHTS, PRIVATE BALCONY AND A LIFT.



Total area (approx.): 91.4 sq. m (983.8 sq. ft)
Balcony area: 11.3 sq. m (121.6 sq. ft)

The south facing reception/dining room provides excellent entertaining space and features floor to ceiling windows which open on to a private balcony.

The apartment boasts a contemporary finish including bespoke joinery, a Poggenpohl kitchen with a controlled lighting system in the principle rooms. The principal bedroom has built-in wardrobes and an en suite shower room and there is a further bedroom and luxury bathroom.

Green Street is situated between North Audley Street and Park Lane, and the property is located at the favoured Eastern end. It is well placed for access to the internationally renowned shops and restaurants of Mayfair and the West End including Selfridges, along with the greenery of Hyde Park.

FEATURES

- Two Double Bedrooms
- Two Bathrooms
- Newly Renovated
- Private Balcony
- Wooden Flooring
- High Ceilings

Price: £2,350 Per week

We aim to make our particulars both accurate and reliable. However they are not guaranteed; nor do they form part of an offer or contract. If you require clarification on any points then please contact us, especially if you're traveling some distance to view. Please note that appliances and heating systems have not been tested and therefore no warranties can be given as to their working order. Energy Rating: D



WETHERELL
MAYFAIR'S FINEST PROPERTIES

102 Mount Street • London • W1K 2TH
T: 020 7529 5588 E: rentals@wetherell.co.uk

wetherell.co.uk

NO ONE KNOWS MAYFAIR BETTER THAN WETHERELL