

87 Largewood Avenue
Surbiton, Surrey, , KT6 7NX

£600,000

Property Summary

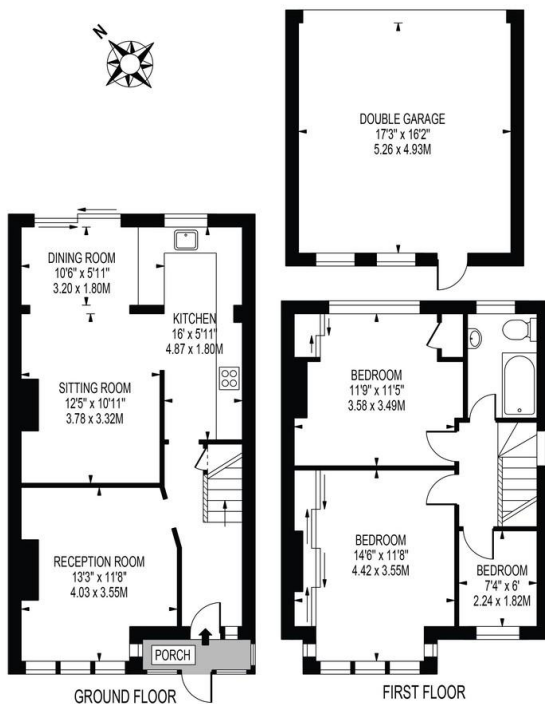
Situated on a quiet and peaceful road moments from highly regarded schools, transport links, green open spaces and local shops is this wonderful home suited for a growing family. Offering ample living space suited for entertaining, a spacious sunny garden and detached garage with rear access too.



LARGEWOOD AVENUE

APPROXIMATE GROSS INTERNAL FLOOR AREA: 981 SQ FT - 91.16 SQ M
(EXCLUDING DOUBLE GARAGE)

APPROXIMATE GROSS INTERNAL AREA OF DOUBLE GARAGE: 279 SQ FT - 25.93 SQ M



FOR ILLUSTRATION PURPOSES ONLY

THIS FLOOR PLAN SHOULD BE USED AS A GENERAL OUTLINE FOR GUIDANCE ONLY AND DOES NOT CONSTITUTE IN WHOLE OR IN PART AN OFFER OR CONTRACT.
ANY INTENDING PURCHASER OR LESSEE SHOULD SATISFY THEMSELVES BY INSPECTION, SEARCHES, ENQUIRIES AND FULL SURVEY AS TO THE CORRECTNESS OF EACH STATEMENT.
ANY AREAS, MEASUREMENTS OR DISTANCES QUOTED ARE APPROXIMATE AND SHOULD NOT BE USED TO VALUE A PROPERTY OR BE THE BASIS OF ANY SALE OR LET.

- Detached garage with rear access
- Further potential to extend STPP
- Quiet and peaceful road
- Close proximity to transport and shops
- Sunny rear garden, suited for al-fresco dining
- Moments from highly regarded schools
- Spacious rooms with high ceilings
- Council tax band - D

17 Claremont Road
Surbiton
Surrey
KT6 4QR

www.humphreyandbrand.co.uk
02083991888
sales@humphreyandbrand.co.uk

Agents Note: Whilst every care has been taken to prepare these particulars, they are for guidance purposes only. All measurements are approximate are for general guidance purposes only and whilst every care has been taken to ensure their accuracy, they should not be relied upon and potential buyers/tenants are advised to recheck the measurements