



57 Riverside House, Fobney Street, READING, Berkshire RG1 6BJ

£1,800 pcm

Property Summary

A light and spacious apartment in an ideal location being within an easy walk of shops and restaurants. The flat is located on the second floor of this modern building and has three bedrooms, two bathrooms and a large living room with kitchen. Available immediately and furnished

Features

- MAIN BED WITH EN-SUITE SHOWER
- TWO FURTHER BEDROOMS
- FAMILY BATHROOM
- LIVING ROOM WITH BALCONY
- KITCHEN AREA WITH APPLIANCES
- UPVC DOUBLE GLAZED WINDOWS
- BALCONY TO MAIN BEDROOM
- ALLOCATED GARAGE PARKING
- COUNCIL TAX BAND "D"



Room Descriptions

SECOND FLOOR

ENTRANCE HALL

With doors to all rooms, door to boiler cupboard, door to storage cupboard

LIVING ROOM

4.63m x 6.05m (15' 2" x 19' 10")

UPVC window with front aspect and UPVC doors to balcony, fireplace with electric coal effect fire, 4 x wall lights, open to kitchen area

KITCHEN AREA

Integrated fridge/freezer, integrated washing machine, electric hob with extractor hood over, electric oven/grill, stainless steel sink and drainer, range of cupboards

MAIN BEDROOM

3.3m x 4.9m (10' 10" x 16' 1")

UPVC window with front aspect and UPVC door to balcony, two fitted double wardrobes and corner cupboard with shelving, electric heater, door to en-suite shower room

EN-SUITE SHOWER ROOM

Shower cubicle with sliding glazed doors and power shower, wash basin with inset mirror over, WC, electric heated towel rail, extractor fan, recessed lighting

BEDROOM TWO

2.5m x 4.4m (8' 2" x 14' 5")

UPVC floor to ceiling window with front aspect, fitted double wardrobe, fitted drawer units, electric heater

BEDROOM THREE

2.43m x 2.6m (8' 0" x 8' 6")

UPVC window with front aspect, fitted double wardrobe, electric heater

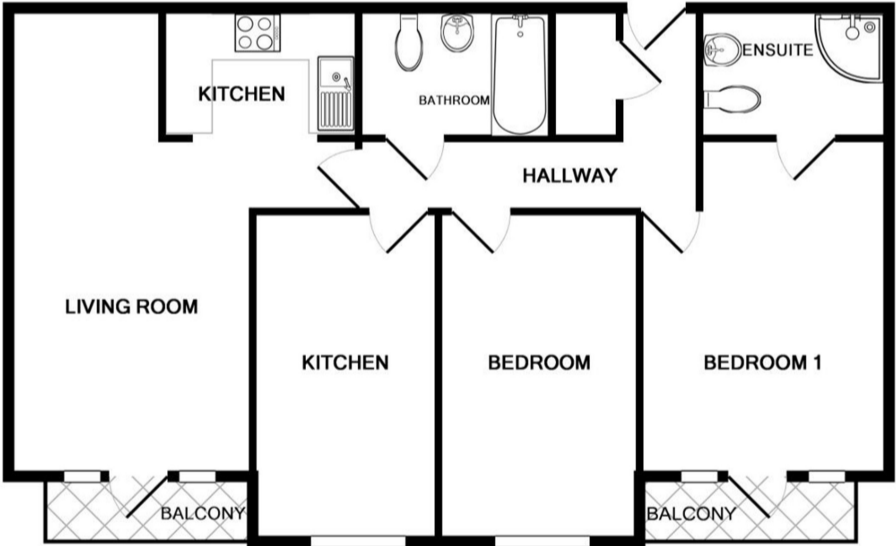
FAMILY BATHROOM

Bath with shower attachment over, wash basin, WC, wall mounted cabinet with mirrored doors, electric towel rail, extractor fan, recessed lighting

OUTSIDE

PARKING

There is an allocated parking space in the covered car park



Whilst every attempt has been made to ensure the accuracy of the floor plan contained here, measurements of doors, windows, rooms and any other items are approximate and no responsibility is taken for any error, omission, or mis-statement. This plan is for illustrative purposes only and should be used as such by any prospective purchaser. The services, systems and appliances shown have not been tested and no guarantee as to their operability or efficiency can be given
Made with Metropix ©2019

