

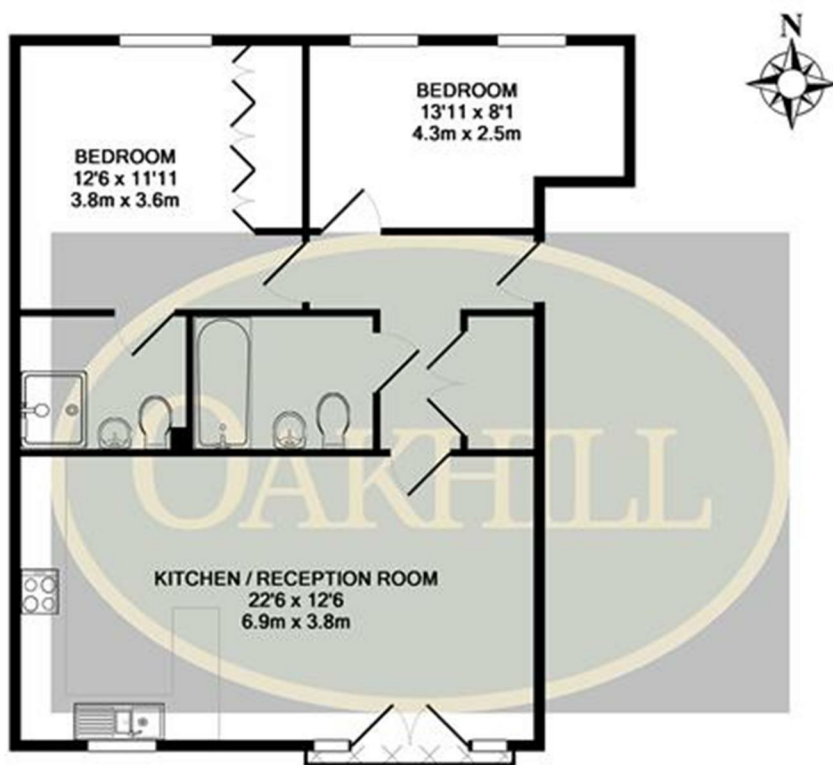


White Lodge Close, Isleworth, Middlesex TW7 6TR

A spacious two double bedroom apartment located in a popular development in the heart of Isleworth. Offering excellent living space with Juliette balcony, open plan kitchen with integrated appliances, two double bedrooms, one with en-suite shower room, family bathroom, and ample storage throughout. Further benefiting from allocated parking for one car.

White Lodge Close is located just moments from The River Thames and provides easy access to Isleworth Rail Station.

£1,450 PER MONTH



TOTAL APPROX. FLOOR AREA 725 SQ.FT. (67.4 SQ.M.)

Whilst every attempt has been made to ensure the accuracy of the floor plan contained here, measurements of doors, windows, rooms and any other items are approximate and no responsibility is taken for any error, omission, or mis-statement. This plan is for illustrative purposes only and should be used as such by any prospective purchaser. The services, systems and appliances shown have not been tested and no guarantee as to their operability or efficiency can be given
Made with Metropix ©2019

Energy Efficiency Rating

	Current	Potential
Very energy efficient - lower running costs		
(92 plus) A		
(81-91) B		
(69-80) C		
(55-68) D		
(39-54) E		
(21-38) F		
(1-20) G		
Not energy efficient - higher running costs		
England & Wales	EU Directive 2002/91/EC	

Environmental Impact (CO₂) Rating

	Current	Potential
Very environmentally friendly - lower CO ₂ emissions		
(92 plus) A		
(81-91) B		
(69-80) C		
(55-68) D		
(39-54) E		
(21-38) F		
(1-20) G		
Not environmentally friendly - higher CO ₂ emissions		
England & Wales	EU Directive 2002/91/EC	



6 South Street, Isleworth, TW7 7BG
Tel: 0208 568 4433
info@oakhillagents.co.uk
www.oakhillagents.co.uk

OAKHILL