



Lakeside Mews

WILSTEAD, BEDS



Area & Transport

WILSTEAD IS A VILLAGE AND CIVIL PARISH IN BEDFORDSHIRE, ENGLAND, SITUATED JUST OFF THE A6 TO LUTON ROAD, FIVE MILES SOUTH OF BEDFORD TOWN CENTRE. THIS QUANT VILLAGE BOASTS A POST OFFICE, TWO PUBS, A PRIMARY SCHOOL AND 2 HISTORIC CHURCHES. THE NEW TOWN OF WIXAMS IS EASILY ACCESSED WHICH OFFERS FURTHER AMENITIES INCLUDING A SELECTION OF SHOPS, TAKEAWAYS AND A STATE OF THE ART RESIDENTIAL HOME.



A421
& A6



BEDFORD
STATION



LUTON
AIRPORT



LAKESIDE MEWS IS A STANDALONE DEVELOPMENT CONSISTING OF TWO LUXURY 5 BEDROOM PROPERTIES NESTLED IN THE POPULAR VILLAGE OF WILSTEAD. WITH EXCITING INTERIORS AND EXPERTLY DESIGNED ACCOMMODATION THESE STUNNING PROPERTIES INSPIRE AND DELIGHT



Specification

KITCHEN/UTILITY
GERMAN SCHULLER KITCHENS
QUARTZ/GRANITE WORKTOPS
PREMIUM INTEGRATED APPLIANCES

BATHROOMS
DESIGNER TOWEL RAILS
PREMIUM SANITARYWARE
PORCELAIN WALL AND FLOOR TILES

FLOORING
PORCELAIN TILES TO KITCHEN/BATHROOMS/UTILITY
AND HALLWAY
CARPETS/ENGINEERED WOOD FLOORING TO ALL OTHER
AREAS

DOORS & WINDOWS
QUALITY INTERNAL DOORS
BI-FOLDING DOORS TO REAR
SAGE UPVC DOUBLE GLAZED WINDOWS

HEATING
HIVE SMART CONTROLS
UNDERFLOOR HEATING TO GROUND FLOOR
GAS CENTRAL HEATING
LOG BURNER

LIGHTING
LED SPOTLIGHTS TO KITCHEN & BATHROOMS
FRONT AND REAR EXTERIOR LIGHTING

EXTERIOR
HIGH QUALITY MARSHAL PATIO SLAB
BLOCK PAVING TO DRIVEWAY
ELECTRIC CAR CHARGER
OUTSIDE TAP WHERE SPECIFIED

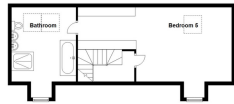




- GERMAN ENGINEERED KITCHEN
- FIVE SPACIOUS BEDROOMS
- STUDY
- THREE CONTEMPORARY BATHROOMS



Plot 2



- GERMAN ENGINEERED KITCHEN
- FIVE SPACIOUS BEDROOMS
- LIGHT & BRIGHT ORANGERY
- DOUBLE GARAGE



CONTACT SELLING AGENTS:



TAYLOR MADE NEW HOMES
BEDFORD@TAYLORMADEPROPERTIES.CO.UK
01234 302043



COMPASS NEW HOMES
NEWHOMES@COMPASSPROPERTYGROUP.CO.UK
01234 343450

A DEVELOPMENT BY:

