

for sale

£299,000 Freehold



Driver Way WELLINGBOROUGH NN8 1FU

- Energy Rating: B
- SHOW HOME CONDITION THROUGHOUT
- KITCHEN/DINER
- 3 BEDROOMS
- EN SUITE TO MASTER BEDROOM



Property Details

Entrance Hall

Stairs rising to first floor landing. Radiator.

Wc/utility

Double glazed window to front elevation. Low level wc and wash hand basin. Base units with work surfaces over. Plumbing for washing machine. Wall mounted boiler. Radiator.

Kitchen/diner 21' 7" Max x 14' 4" Max (6.58m Max x 4.37m Max)

Double glazed French doors to rear. Fitted kitchen with a range of wall and base units with work surfaces over. Integrated appliances including Dishwasher, fridge freezer, electric oven and gas hob. Stainless steel 1 & 1/2 bowl sink and drainer. Built in cupboard. Two radiators.

First Floor Landing

Double glazed window to front elevation. Stairs rising to second floor landing. Radiator.

Lounge 14' 3" Max x 13' 8" Max (4.34m Max x 4.17m Max)

Juliet balcony to rear elevation. Two double glazed windows to rear elevation. Two radiators.

Bedroom 3 9' 2" x 7' 11" (2.79m x 2.41m)

Double glazed window to front elevation. Radiator.

Bathroom

Bath with shower over. Low level wc and wash hand basin with tiling to water sensitive areas. Radiator.

Second Floor Landing

Double glazed window to side elevation. Built in storage cupboard.

Bedroom 1 14' 2" Max x 13' 8" Max (4.32m Max x 4.17m Max)

Two double glazed windows to rear elevation. Radiator.

En Suite

Double shower. Low level wc and wash hand basin with tiling to water sensitive areas. Shaver point and extractor fan.

Bedroom 2 10' 8" Min x 9' Max (3.25m Min x 2.74m Max)

Two double glazed windows to front elevation. Radiator.

Garden

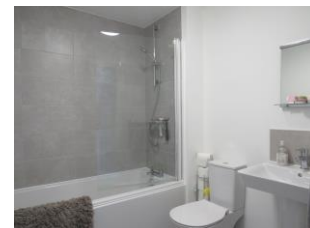
Mainly laid to lawn with patio area. Side gated access.

Parking

Allocated parking to the rear.

Agents Note

Currently the vendor's details do not match the registered title at Land Registry. Please ask the branch for more details.



To view this property please contact Connells on

T 01933 312 363
E rushden@connells.co.uk

66 High Street
RUSHDEN NN10 0PJ

Tenure: Freehold

EPC Rating: B

Property Ref: RDN404540 - 0004

1. MONEY LAUNDERING REGULATIONS Intending purchasers will be asked to produce identification documentation at a later stage and we would ask for your co-operation in order that there will be no delay in agreeing the sale. 2. These particulars do not constitute part or all of an offer or contract. 3. The measurements indicated are supplied for guidance only and as such must be considered incorrect. Potential buyers are advised to recheck measurements before committing to any expense. 4. We have not tested any apparatus, equipment, fixtures, fittings or services and it is in the buyers interest to check the working condition of any appliances.

Connells Residential is registered in England and Wales under company number 1489613, Registered Office is Cumbria House, 16-20 Hockliffe Street, Leighton Buzzard, Bedfordshire, LU7 1GN. VAT Registration Number is 500 2481 05.

see all our properties at www.connells.co.uk | www.rightmove.co.uk | www.zoopla.co.uk