



## Lynton Road, W3

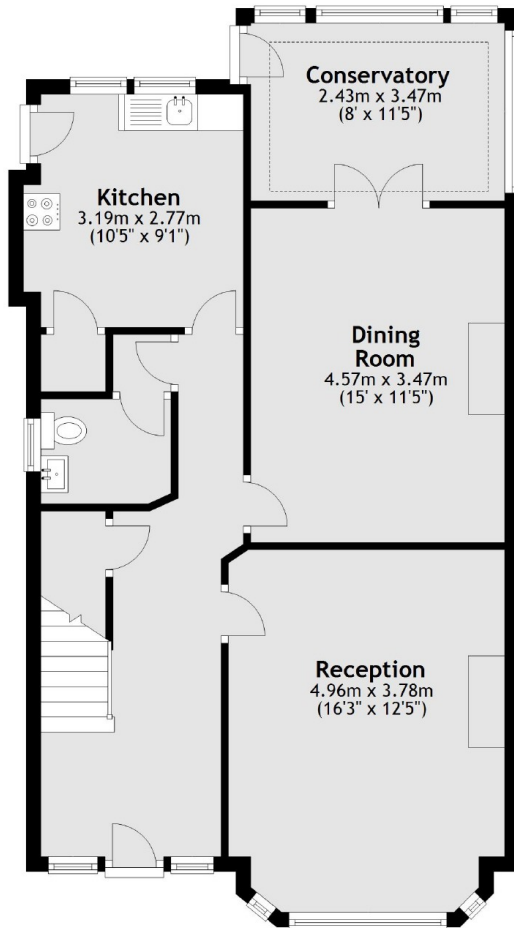
£995,000

A semi-detached Edwardian family home with a large south facing garden. The property is in need of refurbishment throughout, offers plenty of potential to extend subject to all the usual consents and has no onward chain.

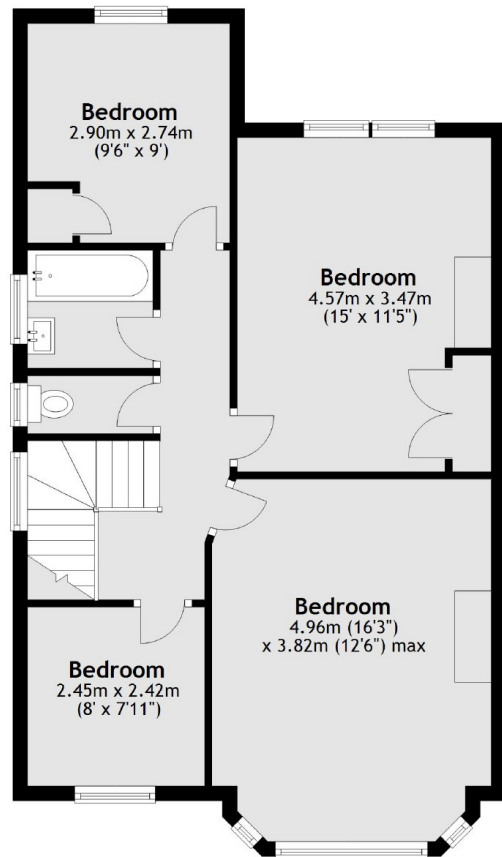
Lynton Road is moments from the future Crossrail station, Acton Mainline and half a mile from West Acton station both providing excellent access into town.

- Four Bedrooms • One Bathroom • Semi-Detached •
- South Facing Garden • Potential To Extend (STPP) • No Onward Chain •

**Ground Floor**



**First Floor**



Total area: approx. 134.8 sq. metres (1451.1 sq. feet)

Robertson Smith & Kempson Acton Sales  
 137 High Street, Acton,  
 London, W3 6LY  
 020 8896 3996  
[actonsales@robertsonsmithandkempson.co.uk](mailto:actonsales@robertsonsmithandkempson.co.uk)

Energy Rating: E. We aim to make our particulars both accurate and reliable. However they are not guaranteed; nor do they form part of an offer or contract. If you require clarification on any points then please contact us, especially if you're traveling some distance to view. Please note that appliances and heating systems have not been tested and therefore no warranties can be given as to their good working order.