

Frank Harris & Co.



Cromwell Tower, EC2Y

£1,800,000

A 31st floor, three bedroom flat with spectacular views towards the London Eye and north-east towards the Olympic Park.



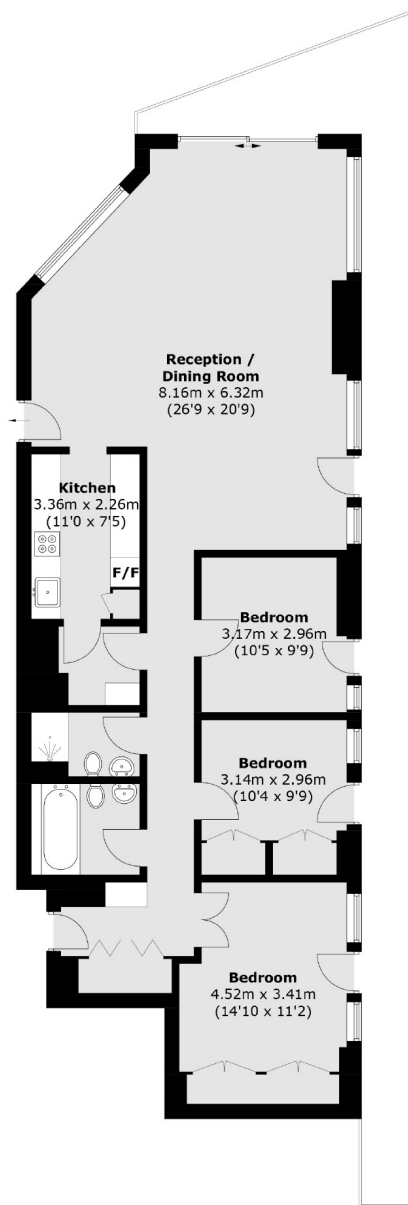
Updated by the current owner to include a newly fitted contemporary kitchen with a stainless steel and Corian worktop and integrated appliances, Both bedrooms have a wall of fitted wardrobes and floor to ceiling windows with a north aspect. The reception room has an area sectioned off by Vitsoe shelving (available by separate negotiation) which is currently being used as a study. There is an area adjacent to the reception room which can be closed off with the original divider for the dining area and a full width door and windows which lead to the balcony/ fire exit.

All residents of Cromwell Tower benefit from use of the Barbican residents only gardens and are just a short walk away from Waitrose and Moorgate station.

- Type 1B • Contemporary Kitchen • Large Bedrooms •
- Open Plan Study • Views Of London Eye • No Onward Chain •



Frank Harris & Co.



Thirty First Floor

Total area (approx.): 110.1 sq. m (1,185.0 sq. ft)
External area: 29.7 sq. m (319.6 sq. ft)

Frank Harris & Co. Barbican and City
87 Long Lane, London,
EC1A 9ET
020 7600 7000
citysales@frankharris.co.uk

Energy Rating: TBC. We aim to make our particulars both accurate and reliable. However they are not guaranteed; nor do they form part of an offer or contract. If you require clarification on any points then please contact us, especially if you're traveling some distance to view. Please note that appliances and heating systems have not been tested and therefore no warranties can be given as to their good working order.