



- Freehold
- Three bedrooms
- Potential to extend
- Period features

Standard Road, Hounslow

A Victorian end of terrace family home situated in a convenient location.

£500,000

Property Description

A Victorian end of terrace family home situated in a convenient location. The living space comprises a front door to entrance hall, a large bay fronted double reception room, dining room, kitchen, downstairs shower room/WC, three double bedrooms and a family bathroom. Further benefits include a rear garden and the potential to extend to the rear and into the loft (subject to planning permission and the usual consents).

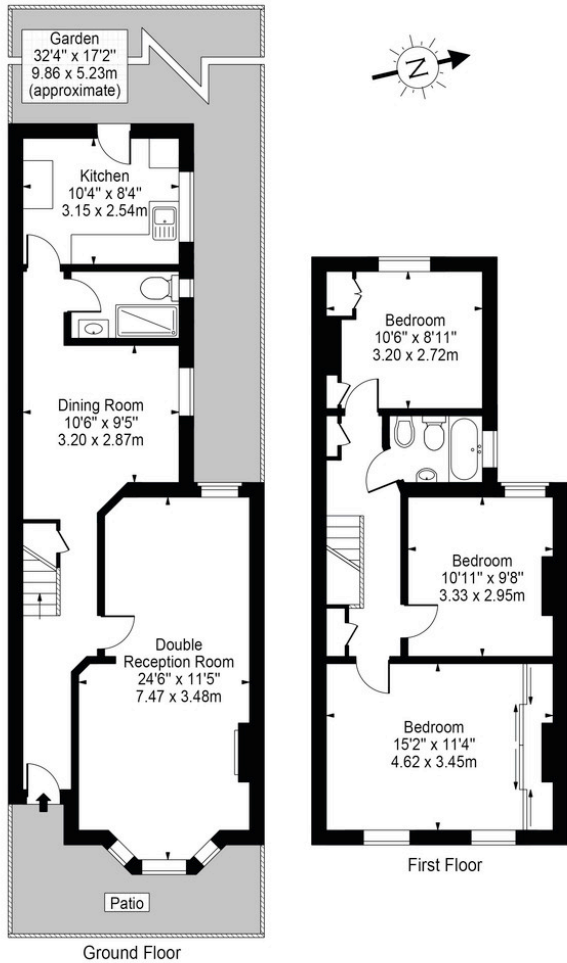
The property is situated in Hounslow and is walking distance to Hounslow High Street with a wide range of shops for your convenience. There are a number of local Infant and Junior Schools close by along with Hounslow West and Hounslow central tube stations.





Standard Road, TW4

Approx. Gross Internal Area 1101 Sq Ft - 102.29 Sq M



For Illustration Purposes Only - Not To Scale Floor Plan by Mira Nikolova Photography

This floor plan should be used as a general outline for guidance only and does not constitute in whole or in part an offer or contract. Any intending purchaser or lessee should satisfy themselves by inspection, searches, enquiries and full survey as to the correctness of each statement. Any areas, measurements or distances quoted are approximate and should not be used to value a property or be the basis of any sale or let.



Energy Efficiency Rating		Current	Potential
Very energy efficient - lower running costs			
(92-100)	A		
(81-91)	B		84
(69-80)	C		
(55-68)	D	60	
(39-54)	E		
(21-38)	F		
(1-20)	G		
Not energy efficient - higher running costs			
England, Scotland & Wales		EU Directive 2002/91/EC	

www.griffinstevens.co.uk
 020 8979 1597
 enquiries@griffinstevens.co.uk

Agents Note: Whilst every care has been taken to prepare these sales particulars, they are for guidance purposes only. All measurements are approximate and are for general guidance purposes only and whilst every care has been taken to ensure their accuracy, they should not be relied upon and potential buyers are advised to recheck the measurements