



28 Langley Avenue
Surbiton, KT6 6QW

Guide Price £575,000

Property Summary

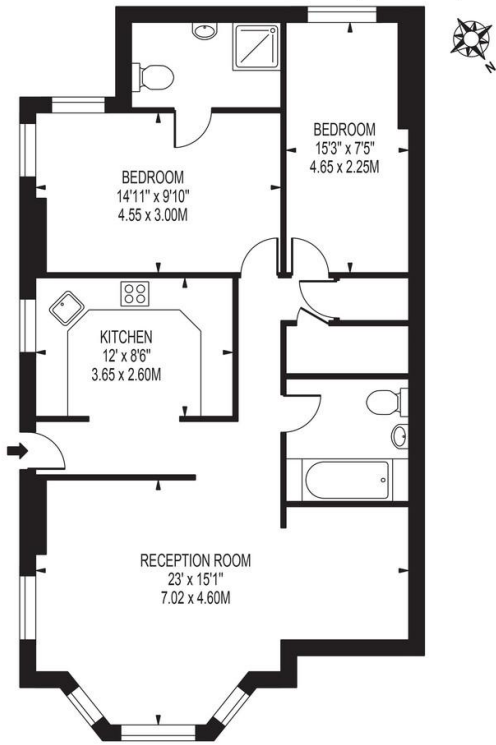
Humphrey & Brand are pleased to present this stunning two bedroom, two bathroom private garden apartment located in a landmark building in the highly desirable Southborough conservation area. Presented in excellent condition throughout and offered to the market with no chain and a share of freehold.



%epcGraph_c_1_245%

LANGLEY AVENUE

APPROXIMATE GROSS INTERNAL FLOOR AREA: 894 SQ FT - 83.10 SQ M



GROUND FLOOR

FOR ILLUSTRATION PURPOSES ONLY

THIS FLOOR PLAN SHOULD BE USED AS A GENERAL OUTLINE FOR GUIDANCE ONLY AND DOES NOT CONSTITUTE IN WHOLE OR IN PART AN OFFER OR CONTRACT. ANY INTENDING PURCHASERS OR LESSEES SHOULD SATISFY THEMSELVES BY INSPECTION, SEARCHES, ENQUIRIES AND FULL SURVEY AS TO THE CORRECTNESS OF EACH STATEMENT. ANY AREAS, MEASUREMENTS OR DISTANCES QUOTED ARE APPROXIMATE AND SHOULD NOT BE USED TO VALUE A PROPERTY OR BE THE BASIS OF ANY SALE OR LET.

- Two bedroom two bathroom apartment located in landmark building
- South facing private garden
- Share of the freehold
- Parking
- No chain
- Located in a landmark detached period building

17 Claremont Road
Surbiton
Surrey
KT6 4QR

www.humphreyandbrand.co.uk
02083991888
sales@humphreyandbrand.co.uk

Agents Note: Whilst every care has been taken to prepare these particulars, they are for guidance purposes only. All measurements are approximate are for general guidance purposes only and whilst every care has been taken to ensure their accuracy, they should not be relied upon and potential buyers/tenants are advised to recheck the measurements