



Dock Meadow Reach, W7

£725,000

This four bedroom house is arranged over three floors and offers over 1,500 Sq Ft of living space. With off-street parking and ample storage, this is the ideal family home.

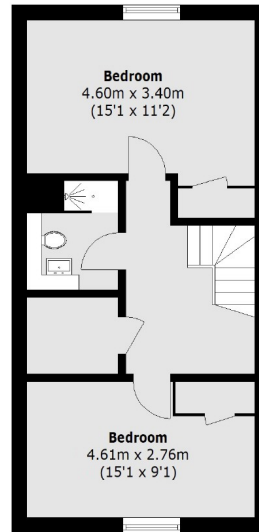


Built in 2013, this four double bedroom house is in excellent condition and generously proportioned throughout. This property is being offered to the market chain free.

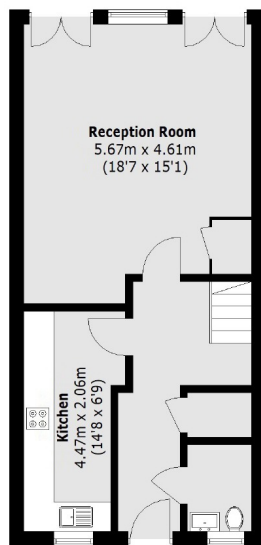
Ideally located for Hanwell Station (Crossrail) and Boston Manor (Piccadilly). Hanwell Locks and Elthorne Park a short stroll away providing excellent outdoor amenities. Well established and very popular pubs locally including The Fox Pub.

- Four Double Bedrooms • Chain Free • Off-Street Parking •
 - Three Bathrooms • Separate Kitchen • Garden •
-

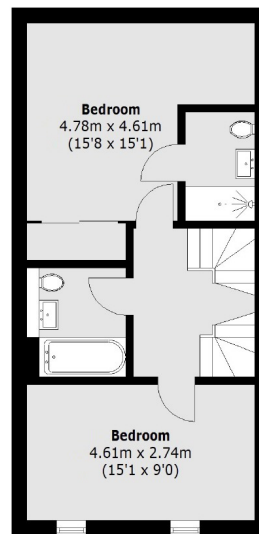




Second Floor



Ground Floor



First Floor

Total area (approx.): 140.1 sq. m (1,508.0 sq. ft)

Robertson Smith & Kempson Hanwell Sales
69 Greenford Avenue,
London, W7 1LL
020 8566 2339
hanwellsales@robertsonsmithandkempson.co.uk

Energy Rating: B. We aim to make our particulars both accurate and reliable. However they are not guaranteed; nor do they form part of an offer or contract. If you require clarification on any points then please contact us, especially if you're traveling some distance to view. Please note that appliances and heating systems have not been tested and therefore no warranties can be given as to their good working order.