



Chandos Avenue, W5

£850,000

We are delighted to offer to the market this four bedroom family home set over three floors with off-street parking and south-westerly garden.

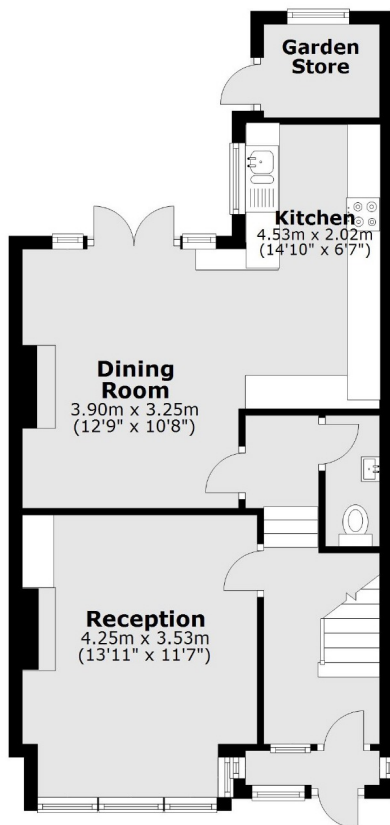


The accommodation is filled with natural light throughout, on the ground floor comprising separate reception room, large dining room/kitchen and WC. Stunning landscaped south-westerly sun trapped garden to enjoy. The first floor affords three bedrooms (two doubles and a single) and family bathroom. The principle bedroom is in the loft.

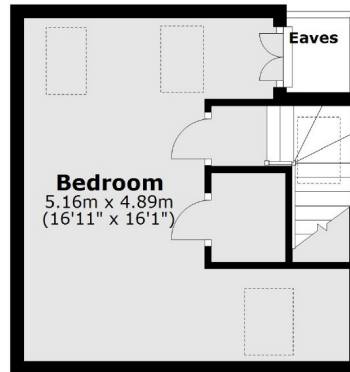
Ideally located for many stations including South Ealing, Northfields & Brentford all within walking distance. Well regarded schools to choose from including the Ofsted outstanding Gunnersbury Catholic school.

- South-Westerly Facing Garden • Four Bedrooms • Excellent Transport Links •
- Well Regarded Schools • Off-Street Parking • Blondin Park •

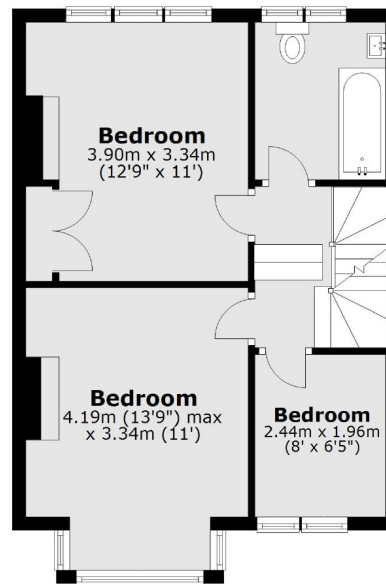




Ground Floor



Second Floor



First Floor

Main area: Approx. 113.5 sq. metres (1221.5 sq. feet)
Plus outbuildings, approx. 2.4 sq. metres (26.3 sq. feet)

Robertson Smith & Kempson Northfields Sales
116 Northfield Avenue,
London, W13 9RT
020 8566 2340
northfieldssales@robertsonsmithandkempson.co.uk

Energy Rating: D. We aim to make our particulars both accurate and reliable. However they are not guaranteed; nor do they form part of an offer or contract. If you require clarification on any points then please contact us, especially if you're traveling some distance to view. Please note that appliances and heating systems have not been tested and therefore no warranties can be given as to their good working order.