



Cuckoo Dene, W7

£675,000

A Mock Tudor style mid terraced house situated on this popular residential road. The well presented property comprises spacious lounge, open plan kitchen/diner with doors leading to a large private garden, three bedrooms and bathroom.

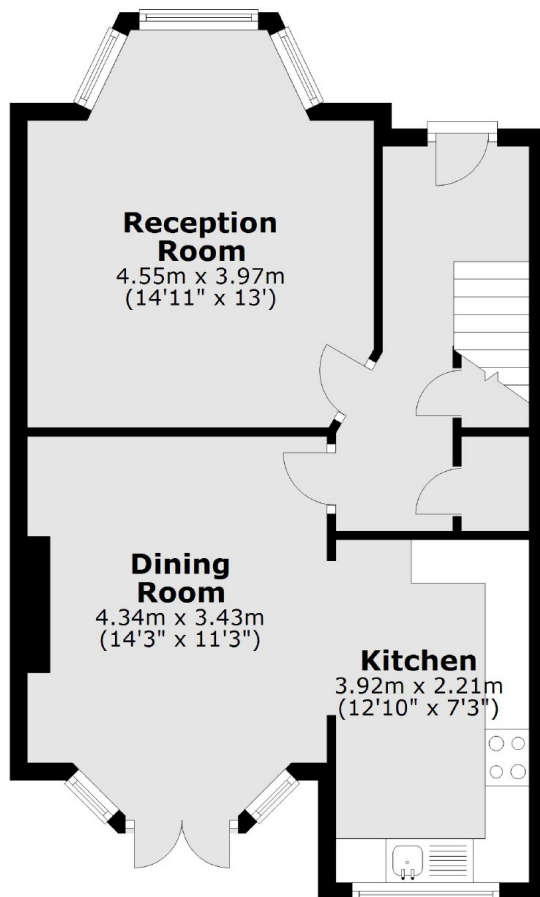


Conveniently situated for local amenities, bus routes to Ealing and Greenford, a short distance to Hanwell mainline station with the impending Crossrail Link and within the well regarded Brentside and Mayfield school catchment.

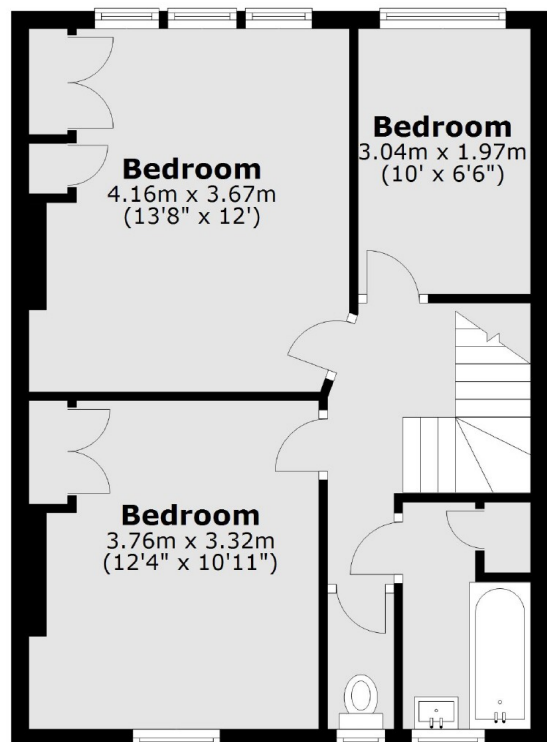
- Mid Terrace Mock Tudor • Three Bedrooms • No Onward Chain •
 - Excellent Transport Links • Bunny Park • Local amenities •
-



Ground Floor



First Floor



Total area: approx. 94.0 sq. metres (1011.7 sq. feet)

Robertson Smith & Kempson Hanwell Sales
69 Greenford Avenue,
London, W7 1LL
020 8566 2339
hanwellsales@robertsonsmithandkempson.co.uk

Energy Rating: D. We aim to make our particulars both accurate and reliable. However they are not guaranteed; nor do they form part of an offer or contract. If you require clarification on any points then please contact us, especially if you're traveling some distance to view. Please note that appliances and heating systems have not been tested and therefore no warranties can be given as to their good working order.