



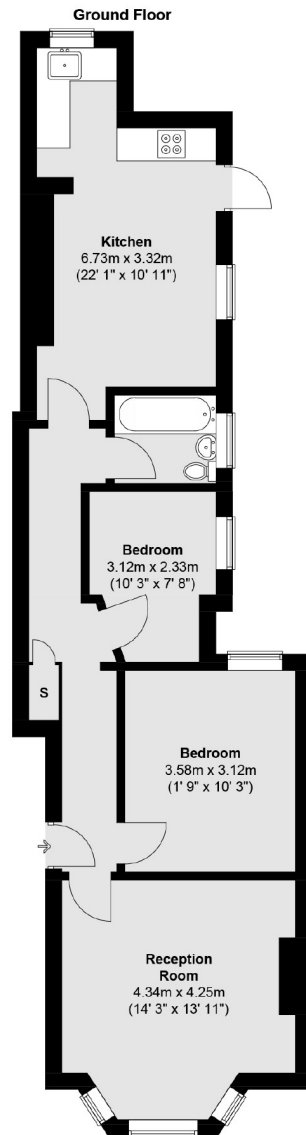
Radbourne Road, SW12

£1,800 PCM

A ground floor two bedroom property offered in excellent condition throughout, this property would be perfect for a professional a couple.

- Ground Floor Flat
- Good Decorative Order Throughout
- Reception Room
- Two Bedrooms
- Unfurnished
- Shared Garden

For further information on the costs associated with renting a property, please pop into our office or visit our website.



Total area (approx.) : 70.2 sq. m (756 sq. ft)

Jacksons Balham
8-11 Balham Station Road
London
SW12 9SG
020 8675 6565
balham.lettings@jacksonsestateagents.com

Energy Rating: D We aim to make our particulars both accurate and reliable. However they are not guaranteed; nor do they form part of an offer or contract. If you require clarification on any points then please contact us, especially if you're traveling some distance to view. Please note that appliances and heating systems have not been tested and therefore no warranties can be given as to their good working order.