

**HARRISON
INGRAM**

**Carey Court
Gravel Hill Close, DA6 7NT**



£950 pcm

LOCATION, LOCATION, LOCATION!!! If this is at the top of your "wish" list, then we suggest you WASTE NO TIME IN VIEWING this SPACIOUS, lower ground floor purpose built flat. Situated within close proximity of BEXLEY VILLAGE which offers an array of shops, bars, restaurants, STATION for the BUSY COMMUTER, Hall Place and more extensive shopping facilities at BEXLEYHEATH and CRAYFORD. Internally the property offers VERY WELL PRESENTED accommodation and features include; BIG LOUNGE with 'Juliette' BALCONY and is open plan through to a modern fitted kitchen, TWO BEDROOMS (one double, one single), SMART bathroom with shower, UPVC double glazed, gas central heating, laminate wood flooring, modern neutral decor, secure entry phone system, communal gardens, residents parking and GARAGE. The property is UNFURNISHED (white goods included) and will be AVAILABLE IMMEDIATELY. Please note; NO PETS, SMOKERS, HOUSING BENEFIT or STUDENTS.

COMMUNAL HALL

Accessed via entry phone system, carpeted stairs leading down to the entrance of flat, electric meter cupboard.

ENTRANCE HALL

UPVC entrance door, entry phone, dado rail with wood panelling below, laminate wood flooring, double built in storage cupboard housing gas meter, smoke alarm, central heating thermostat, radiator.

LOUNGE



19' 6" x 14' 7" (5.94m x 4.44m) A lovely size and bright room with UPVC double glazed windows to rear and door to 'Juliette' balcony and overlooking landscaped gardens, dado rail with wood panelling below, laminate wood flooring, radiator x2, wall lights, doorway through to:-

KITCHEN

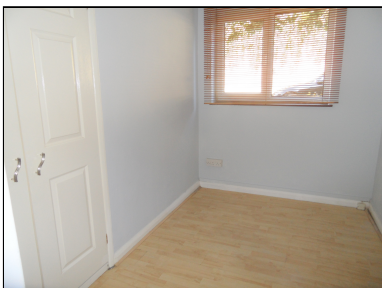
13' 7" x 8' 3" (4.14m x 2.51m) Large UPVC double glazed window to rear overlooking gardens, extensively fitted with matching range of wall, base and drawer units with chrome handles, ample granite effect worktop surfaces, built in stainless steel oven and inset 4 ring gas hob with stainless steel extractor above, integrated fridge and freezer, washing machine, stainless steel sink unit with chrome mixer tap, granite effect splashbacks, cupboard housing boiler for central heating and hot water system.

BEDROOM 1



12' 5" x 12' 5" (3.78m x 3.78m) UPVC double glazed window to front, radiator, wood flooring, double built in wardrobe.

BEDROOM 2



12' 5" x 8' 3" (3.78m x 2.51m) UPVC double glazed window to front, radiator, wood flooring, double built in wardrobe.

BATHROOM



Very smart white suite comprising "L" shaped panelled bath with chrome mixer tap, shower unit, glass shower screen, low level WC with concealed cistern, vanity wash hand basin with chrome mixer tap and cupboards under, extractor, chrome heated towel rail, fully tiled walls, tiled floor, illuminated wall mirror.

GARDENS

Landscaped communal gardens.

PARKING

En-bloc plus residents parking.