



Adelaide Road, W13

£875,000

An outstanding Victorian house which has been beautifully refurbished by the current owners.

Set in an increasingly popular area nestled between West Ealing (Crossrail) and Northfields (Piccadilly line).



The current owners have virtually taken the house back to brick, cleverly extending to the rear whilst sympathetically updating the rest of the house.

Entrance porch to the hallway with guest wc, two impressive interconnecting reception rooms with a feature fireplace, you then come through to the fabulous open plan kitchen/dining room with bifold doors to the well landscaped west facing garden.

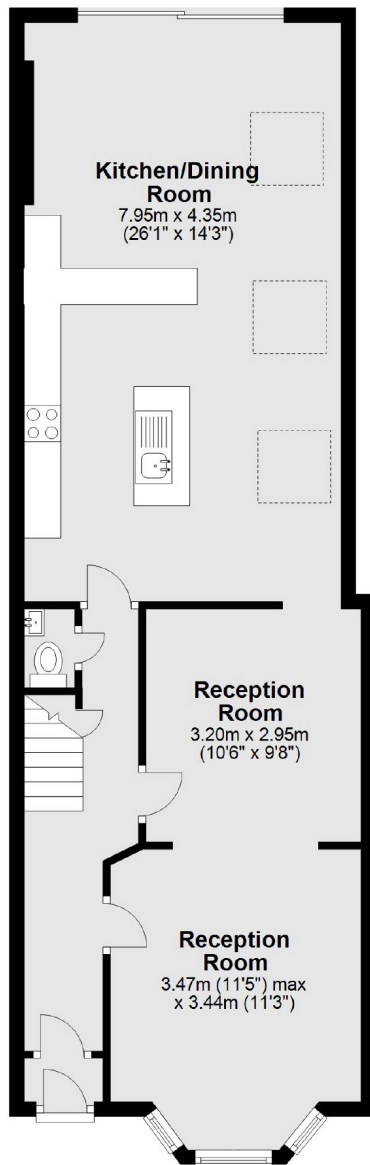
Upstairs there are three double bedrooms and a stylish modern bathroom.

Well positioned for a multiple choice of shopping and transport options and much sought after primary and secondary schools. There are too many features to list here so come and view and we'll talk you through them.

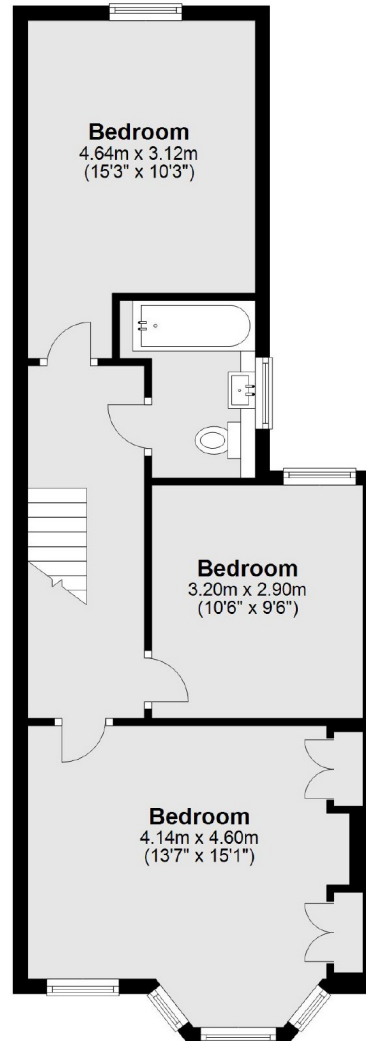
- Victorian House • Two Reception Rooms • Feature Fireplace •
 - West Facing Garden • Good Transport Links • Close to Schools •
-



Ground Floor



First Floor



Total area: approx. 119.8 sq. metres (1289.5 sq. feet)

Robertson Smith & Kempson Northfields Sales
116 Northfield Avenue,
London, W13 9RT
020 8566 2340
northfieldssales@robertsonsmithandkempson.co.uk

Energy Rating: D. We aim to make our particulars both accurate and reliable. However they are not guaranteed; nor do they form part of an offer or contract. If you require clarification on any points then please contact us, especially if you're traveling some distance to view. Please note that appliances and heating systems have not been tested and therefore no warranties can be given as to their good working order.