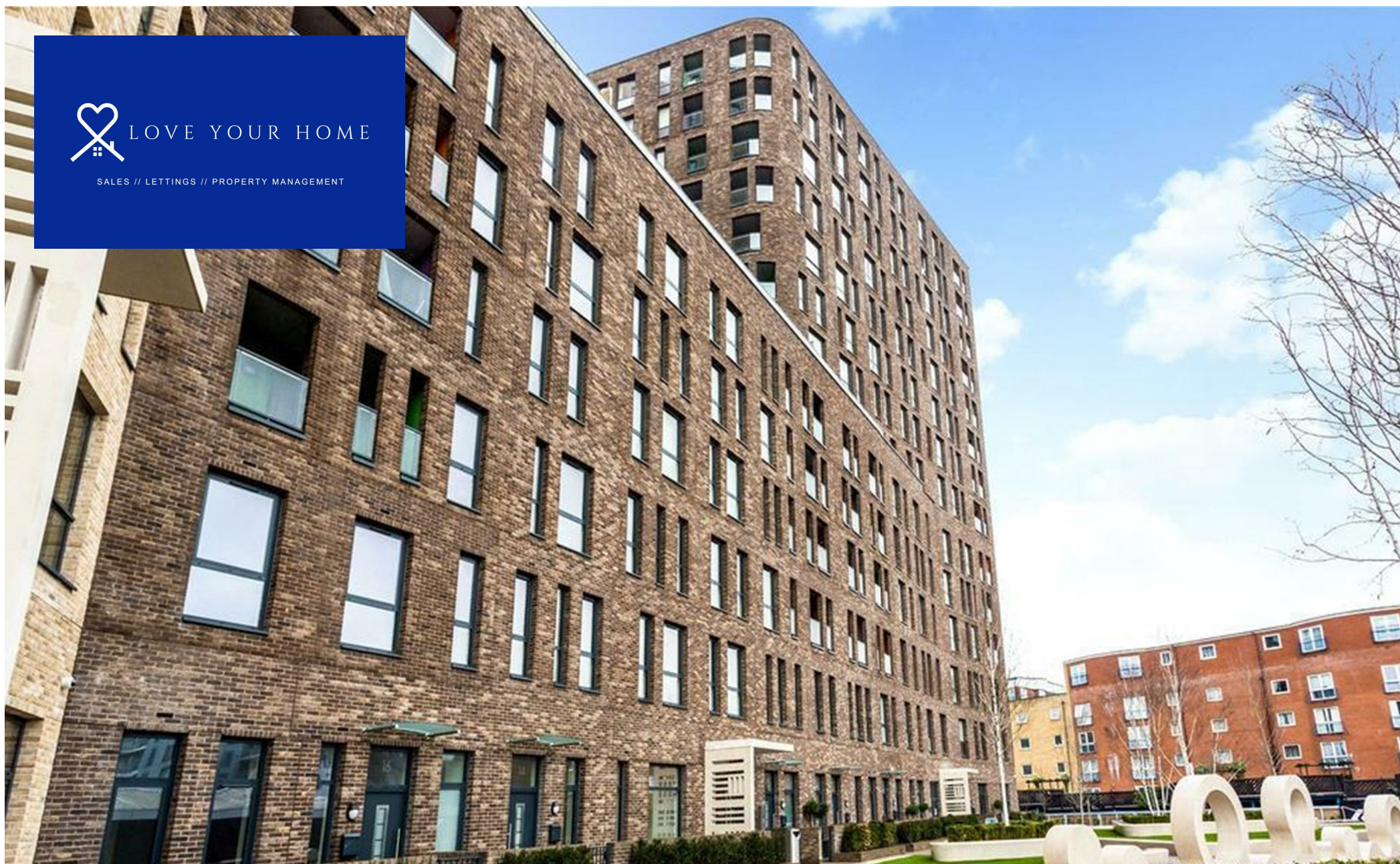




LOVE YOUR HOME

SALES // LETTINGS // PROPERTY MANAGEMENT



103, Delancey Apartments 12 Williamsburg Plaza, Manhattan Plaza, Canary Wharf, London, E14 9XX
£450,000



103, Delancey Apartments 12 Williamsburg Plaza, Manhattan Plaza, Canary
Wharf, London, E14 0YV
£450,000

Located in Canary Wharf, is this stunning and modern one bedroom, one bathroom apartment in the
Manhattan Plaza development in E14.

Description

With a spacious double bedroom, an open plan modern kitchen and living room, 1 bathroom and is situated on the 1st floor with Canary Wharf views.

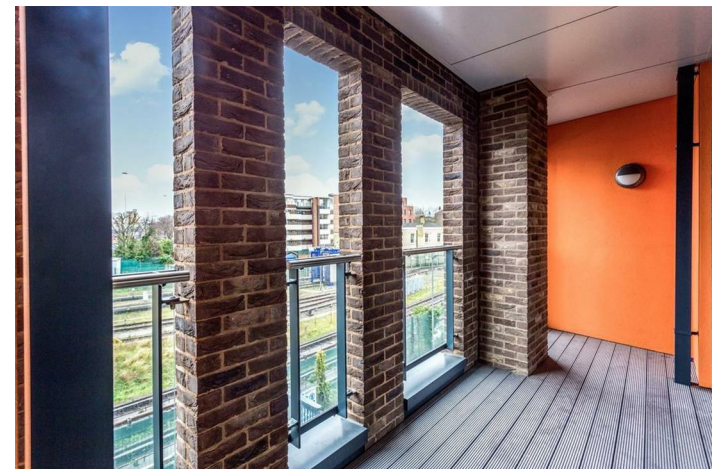
Offered including the furniture pack and benefits from the use of a 24hr concierge, residents gym and with amazing views of the local area.

Walking distance to Blackwall DLR station and only 1 mile from the new Crossrail station in Canary Wharf.

Leasehold.

Situation

Located in Canary Wharf, is this stunning and modern one bedroom, one bathroom apartment in the Manhattan Plaza development in E14.

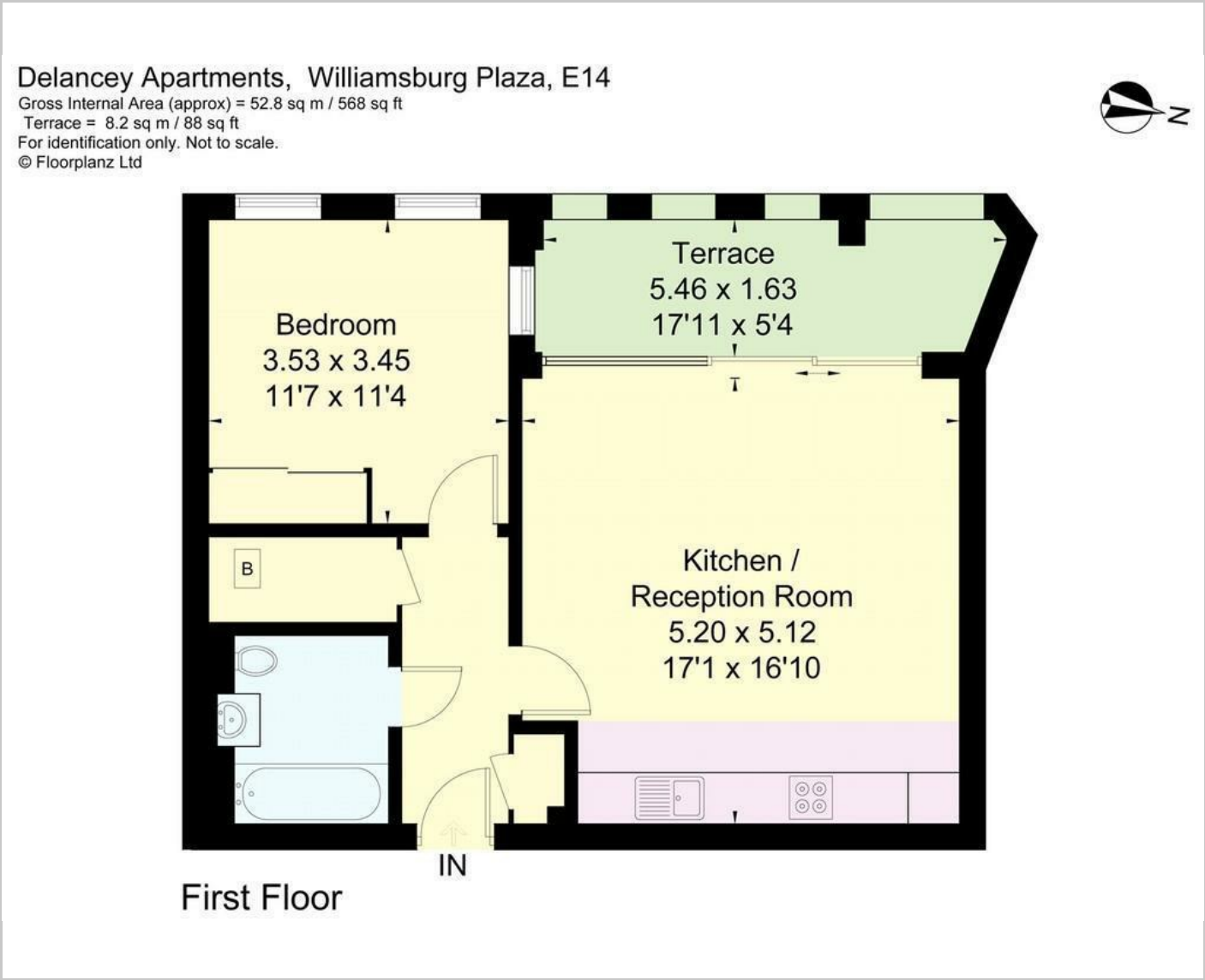


null

Council Tax Band: D

Available:

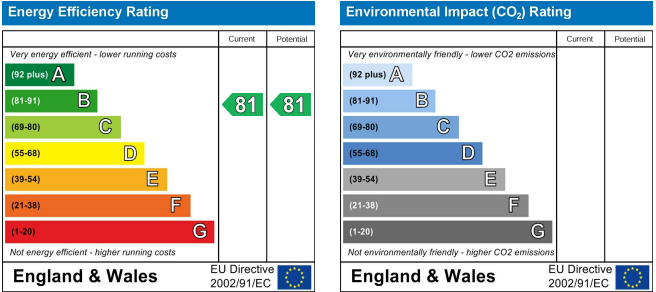
Floor Plans



Area Map



Energy Performance Graph



These particulars, whilst believed to be accurate are set out as a general outline only for guidance and do not constitute any part of an offer or contract. Intending purchasers should not rely on them as statements of representation of fact, but must satisfy themselves by inspection or otherwise as to their accuracy. No person in this firms employment has the authority to make or give any representation or warranty in respect of the property.